



Morphological characterization of the American oil palm collection *Elaeis oleifera* (Kunth) Cortés

Caracterización morfológica de la colección de palma americana de aceite *Elaeis oleifera* (Kunth) Cortés

Leidy Paola Moreno Caicedo* and Silvio Erasmo Bastidas Pérez

Corporación Colombiana de Investigación Agropecuaria, CORPOICA. Palmira, Valle-Colombia. Author for correspondence: lepamoreno@gmail.com

Rec.:27.10.2015 Acep.: 18.12.2015

Abstract

59 accessions of the American oil palm, also known as Nolí palm, were characterized in the Research center El Mira of Corpoica –Colombia. Based on 13 qualitative descriptors, in order to identify genotypes with desired traits for use in the breeding program. The multiple correspondence analyses allowed to identify five factors which express 100 % of the collection variability. The affinity hierarchical classification identified four groups by descriptors action: form of reproduction, unripening fruit bunch color, ripening fruit bunch color, fiber percentage in the bunch and bunch exhibition percentage. 97.3 % of the palms, performs a prostrated stem, 100 % of total population, performs inserted leaflets in single plane. In the palm collection work, the color of unripe fruit bunch type green, represents the 4.5% of the population, 5.3% of the palms are prolific type and 6.4% performs a hermaphrodite flowering stage. No androgynous palm inflorescence were recorded. 87% of the palm collection have allowed to establish inflorescence with 25% of enclosure fibers, which represents 75% bunch exposure. These two traits, allows cross-pollination and valorization of *E. oleifera* genetic resources which will be essential for the development of American oil palm cultivation and plant breeding of the species.

Keywords: Genetic resources, green Nolí, morphological descriptors, palm prolific, variability collection.

Resumen

En el Centro de investigación El Mira de Corpoica, se caracterizaron 59 accesiones de palma americana de aceite, también llamada palma Nolí; de la colección de trabajo, con base en 13 descriptores cualitativos. El análisis multivariado por correspondencias múltiples identificó cinco factores que expresan el 100% de la variabilidad de la colección. La clasificación jerárquica por afinidad identificó cuatro grupos por acción de los descriptores: forma de reproducción como se obtuvieron las accesiones, color del fruto inmaduro, color del fruto maduro, porcentaje de fibra en el racimo y porcentaje de exposición del racimo. El 96,9% de las palmas presentan tallo postrado, el 100% presentan hojas con los folíolos insertados en un solo plano. En la colección se encontró que el color de fruto inmaduro tipo verde representa el 3,7% de la población; el 5,2% de las palmas son del tipo prolífico y el 6,3% poseen floración hermafrodita. No se encontraron palmas con floración andrógina. El 72% de las palmas de la colección emiten inflorescencias con 25% de fibras envolventes, lo cual representa un 75% de exposición del racimo; estas dos características facilitan, la polinización natural. La utilización y puesta en valor de los recursos genéticos de *E. oleifera* será esencial para el desarrollo del cultivo de palma Americana de aceite y el mejoramiento genético de la especie.

Palabras clave: Descriptores morfológicos, Nolí verde, palma prolífica, recursos fitogenéticos, variabilidad de la colección.

Introduction

The genetic diversity of plant species is being threatened by habitat loss, global warming, overexploitation and population growth. These factors are constantly increasing. The conservation of plant genetic resources takes importance worldwide and remains a concern to keep the highest number of species conserved not only in its origin center, but also in those places where their use has economic importance or economic potential (Sevilla, 2006). Therefore, the proper characterization of cross-pollination populations and *ex situ* collections, have allowed to identify interest traits to plant breeding and important tools which will optimize conservation and identification of valuable American oil palm genotypes. Globally, there are about 2600 species of palms, distributed in tropical and subtropical ecosystems. These are one of the most important non-timber forest resources used for housing construction, tool making, craft production, as a food source and the production of edible oils. In addition, these species are distributed from sea level up to 3000 m. a. s. l. (Dransfield, Uhl, Asmussen, Baker, Harley, & Lewis, 2008). The Noli palm belongs to *Arecaceae* family, is a native plant from South America and Central America. In Colombia, it is scattered on the north coast (Valley of Sinu), throughout the Magdalena river region, from San Alberto (César) to Lérída (Tolima) (Ooi, Da Silva, Müller, & Nascimento, 1981; Seng 1983; Dransfield et al., 2005).

The scientific interest of the *E. oleifera* species, is due to its economic importance, the high content of unsaturated fatty acids (oleic > 60%, and linoleic acid > 18%), low rate of stem growth and tolerance to some limiting diseases in the cultivation of American oil palm. For example, bud rot and vascular wilt caused by *Fusarium oxysporum* (Miranda, Rabelo, Bueno, Barbosa, & Ribeiro, 2001; Barcelos, Amblard, Berthaud, & Seguin, 2002), the ability to transmit their traits and produce inter-specific hybridization which is being followed in oil palm for introgression of various traits with the two species (Moretzsohn et al., 2002; Alvarado & Sterling, 2004; Rey, Gómez, Ayala, Delgado, & Rocha, 2004; Zaki, Ismail, Rosli, Chin, & Singh, 2010; Barcelos, Rios, & de A-Cunha, 2015).

The aim of this research was to characterize 59 accessions from the Noli palm of the Corporación Colombiana de Investigación Agropecuaria- Corpoica, collection work with thirteen (13) descriptors, in order to identify genotypes or group of genotypes with desired traits for use in American oil palm breeding program.

Material and methods

The research was carried out at the “El Mira”, Corporación Colombiana de Investigación Agropecuaria- Corpoica, located in Tumaco-Nariño, Colombia, at 16 m. a. s. l., the area is characterized by bimodal rainfall regime. The Noli palm work collection was planted in 1977, consists of 59 accessions generated among selected palms in Valle del Sinu, Cereté, Córdoba, of which 11 were obtained by autopolination, 10 are open pollinated and 38 come from controlled crossing. Of these 59 accessions, 21 belong to the system of Corpoica germplasm banks. The work collection represents a total of 1600 plants, from which 828 plants perform significant matches with the evaluated experimental population.

The matched collection work were further classified into each accession, 6 palms were characterized with two or three repetitions per accession, based on 13 qualitative morphological descriptors including the form of reproduction (Table 1), to perform their function of evaluated materials in field conditions throughout regular visits. The viability is greatly affected by quality of the observations resulting from plant structures and visual description. The color variable was measured with reference to the color chart proposed by Munsell plant tissue color charts.

In addition, traits were encoded to convert them into numeric variables, in order to perform Multiple Correspondence Analysis (MCA). The modal characteristics in the 6 evaluated American oil palms. With the array of traits and accessions, we proceeded to establish the MCA and construction of the genetic distances dendrogram with SAS 9.3 software®.

Results and discussion

The morphological descriptors is frequently used to determine accessions of the work collection. In full plant breeding program, Corpoica, typically produce palms which perform the following traits: immature fruit color status from yellow (2.5Y7/6) to mustard yellow (5Y7/10), and a small proportion of the collection (4.5%) perform green coloration (5GY4/6). (Table 1). In addition, 96.4% of fruit bunches, are considered orange-red of ripening fruit (10R4/10) and the remaining 3.6%, red color. The amount of fiber in the fruit bunch which produces 25% of inflorescence exposure in 75% (Table 2). In other words, the inflorescence at anthesis time, is not completely enclosed in the protective bracts, which is enough to facilitate cross-pollination, either by insects (Entomophilous pollination) or by wind action (Anemophilous pollination), the fruit bunch retains the bract vestiges until fruit ripening.

Table 1. Descriptors used to characterize the work collection of the oil palm *E. oleifera*

Descriptor	Descriptor state	Description
Reproduction method	Free or open pollination	Seeds were obtained directly from the mother plant. Genetic relationship: half-siblings.
	Auto pollination	The female inflorescence was pollinated with pollen from the same palm. Genetic Relation: endogamous Complete Brothers.
	Controlled crossing	The female inflorescence was pollinated with pollen from another palm. Genetic relationship: complete Brothers
Inflorescence cycle	Female	Palm with female inflorescences and only with fruit bunches.
	Male	Palm with only male inflorescences.
Stem elongation	Prostrated	Part of the palm stem lying on the floor.
	Columnar	Columnar stipites
Leaflets disposition	One plane	Leaflets are regularly distributed along the rachis and inserted on a single plane
	several planes	Leaflets are inserted into several planes
Color of leaf petiole	Green	-
	Yellow	-
Color of leaf pulvinules	Green	-
	Yellow	-
Prolificity	Normal	Presence of a single inflorescence on each palm leaf
	Prolific	Presence of two or more inflorescences in some palm leaflets
	Normal	Presence of normal male or female flowers in separate inflorescences
Type of inflorescences	Hermaphrodite	Presence of normal male and female flowers on the same inflorescence
	Androgynous	Presence of female flowers in inflorescences
	Yellow	Yellow fruit epidermis
Immature fruit color	Mustard yellow	Mustard yellow fruit epidermis
	Green	Green epidermis of the fruits
	Green-yellow	Green-yellow epidermis of the fruits
Color of ripe fruit	Yellow	Yellow epidermis of ripe fruits
	Red-orange	Red-orange epidermis of ripe fruits
	Red	Red epidermis of ripe fruits
Percentage of fibers in the inflorescence	25%	The fibers cover 25% of the inflorescence
	50%	The fibers cover 50% of the inflorescence
	75%	The fibers cover 75% of the inflorescence
Percentage of bunch exposure	25%	Only 25% of the bunch is free of enveloping fibers
	50%	50% of the bunch is free of enveloping fibers
	75%	75% of the bunch is free of enveloping fibers
<i>Cercospora</i> sp. presence in lower leaves	Present	Presence of orange spots, typical of <i>Cercospora</i> sp., in old leaves or lower leaves palm
	Absent	Completely healthy leaves

Source: Bastidas & Hurtado, (1993).

Some palms of the *E. oleifera* species from Cereté series, had the ability to produce multiple inflorescences (Bastidas & Hurtado, 1993; More-

no & Romero, 2015). In this research, only 5.3% of the evaluated population perform this trait (Prolificacy). It is important to note that the type of inflorescences obtained in this research, only 6.4% of the hermaphrodite population inflorescences performed in 22% of the 59 accessions. (Figure 1). A quality highlight of the collection is the absence of palms with androgynous inflorescence (having male and female flowers in distinct parts of the same inflorescence). (Tables 1 and 2).



Figure 1. Growth and emergence of the inflorescence. a). American oil palm in female cycle. b). American oil palm in male cycle. c). Normal inflorescence. d). Hermaphrodite inflorescence. e). Androgynous inflorescence.

Table 2. Frequency table of 13 descriptors work collection for Noli palm.

Descriptor	Category	Portion/percentage %
Reproduction method	Open-pollinated	16.9
	Auto-pollination	18.6
	Controlled crossing	64.4
State stem palm	Prostrated	97.3
	Columnar	2.7
Disposition of leaflets leaf	One plane	100
	Several planes	0
Color leaf petiole	Green	100
	Yellow	0
Color leaf pulvinules	Green	100
	Yellow	0
Prolificity	Normal	94.7
	Prolific	5.3
Flower type	Normal	93.6
	Hermaphrodite	6.4
	Androgynous	0
Immature fruit color	Yellow	43.4
	Mustard yellow	50.9
	Green	4.5
Color of ripe fruit	Green-yellow	1.2
	Yellow	3.4
	Red-orange	96.4
Percentage of fibers in the inflorescence	Red	0.2
	25%	87.0
	50%	11.7
Percentage of bunch exposure	75%	1.3
	75%	87.1
	50%	11.7
<i>Cercospora</i> sp. presence in lower leaves	25%	1.2
	Present	99.9
	Absent	0.1

Given these concerns, 86.6% of the plants had female inflorescence cycle (97.3%) and is generally considered to indicate the ability to perform a prostrate stem, normal phenomenon in this species. (Figure 2). In addition, the leaflets of *E. oleifera* species are regularly distributed along the rachis and inserted on a single plane, opposite to the insertion of the leaflets of the palms of the *E. guineensis* species, which are inserted at several planes (Corley & Tinker, 2003; Moreno & Romero, 2015). (Table 1, Figure 3). Petioles and leaves performed green pulvinules, which is an indicator of the low variability of the work collection, in these and other traits, while recognizing different states of green color, may indicate a nutritional deficiency. In the *E. guineensis* species, variations occur in these traits ranging from green to bright yellow (Corley & Tinker, 2003; Moreno & Romero, 2015) (Figures 4,5). Finally, the presence of *Cercospora* sp. widely distributed in all palms collection, was only identified in lower leaves, those already fulfilled their mission to feed and sustain a fruit bunch, and were also close to the artificial pruning, which is established once or twice a year. (Figure 6).



Figure 2. Stem elongation of Noli palm. a). American oil palm with prostrate stem. b). American oil palm with columnar stem



Figure 3. Leaflets and petiole disposition of the Noli palm. a). Leaflets (leaf 17) inserted on a single plane. b). Leaflets (leaf 17) inserted on several planes. c). Green color pulvinules. d) Yellow color pulvinules. e). Green color petioles (leaf 17). f). Yellow color petioles (leaf 17)



Figure 5. Fruit and fruit bunch ripening stage of Noli palm. a). Immature fruit yellow color. b). Immature fruit mustard yellow color. c). Immature fruit green color. d). Immature fruit green- yellow color. e). Ripening yellow color of Noli palm fruit. f). Ripening red-orange color of Noli palm fruit. g). Ripening red color of Noli palm fruit

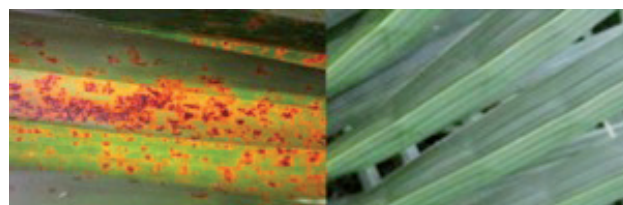


Figure 6. Incidence of *Cercospora* sp. In Noli palm. a). Leaf with presence of *Cercospora* sp. b). Healthy leaf

The MCA performed with 13 qualitative descriptors, indicates the 59 accessions of Noli palm were classified into four groups according to the degree of expression of these traits. Therefore, the MCA shows little variability in the work collection of the Noli palm and only 5 factors or correlations explain 100% of the variability according to the evaluated traits. The first correspondence contributes to 30.01% of the total collection variability. Alternatively, the second explains 28.71% of the variability collection, the third, 17.29%. The first three, provide the 76.01% of the total variability in the work collection (Table 3).

Table 3. Values and proportion of variance explained in the Multiple Correspondence Analysis (MCA) based on 13 qualitative variables

Matches	Contribution of variability (%)	Cummulative Variability (%)
1	30.01	30.01
2	28.71	58.73
3	17.29	76.01
4	14.18	90.20
5	9.80	100.00

Respectively, the low variability collection is explained in large part due to their genetic origin and geographical location, as palm progenitor of the collection which were selected in cross-pollination populations of spontaneous growth in field conditions at Valle del Sinú in influence areas of the municipality of Cerete- Cordoba, Colombia. Although, the seed reproduction system of Noli palm where cross-pollination predominates (allogamy), and this provides more accurate and reliable estimates of small cross-pollination populations, can be assumed the occurrence of

pollinations amongst related American oil palms (family) with common ancestors, generating populations with some degree of introgression of various traits. Presumably, 11 of the 59 characterized progeny were produced by auto-pollination and 10 are open-pollinated but with high probability of their seed production overcoming by crossing among neighboring palms with some degree of partnership.

The dendrogram (Figure 7), represents the ranking of 59 accessions respect to other in relation to the thirteen (13) descriptors evaluated. (Table 1). Affinity, 58 of 59 accessions from the collection work were arranged in three groups, and a fourth group, separated by their difference with the rest of accessions. According to the grouping, the work collection of Nolí palm can be described as follows:

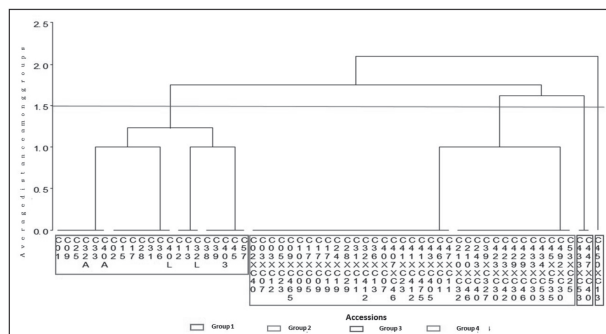


Figure 7. Dendrogram obtained based on 13 descriptors represented by qualitative characteristics of Nolí palm.

Group 1: This group was formed by 21 accessions which represent 35.6% of *E. oleifera* population. In this group, 11 accessions were obtained by auto-pollination, the other 10 accessions, performed an open pollination, although can assume had some degree of inbreeding. Figure 2, exhibits the Nolí palm fruit and fruit bunch development and growth stage of Nolí palm, for the color of unripe fruit, 55.4% of the accessions of this group, produce yellow fruit, mustard yellow fruit 38.4%; while the color of red-orange fruit is fully mature in 96.6% of cases, and 3.4% is yellow. (Figure 3). An important trait, corresponds to 83.6% from palms belongs to accessions of this group which performed the emission of female inflorescences with little fiber and only covers 25% of the inflorescence. (Figure 4). On this base, this can lead to establish 75% of the remain exposed to favoring cross-pollination, whether by pollinating insects or in a lesser extent, by wind (Table 4) while 14.4% had 50% of coverage at anthesis time. Consequently, for the inflorescence trait, 6.7% of the evaluated palms are prolific, and 8.4% are hermaphrodites which

produce inflorescences with 84.7% in normal conditions.

Table 4. Frequencies for 5 qualitative descriptors bunched by 59 accessions of the work collection.

Descriptor	Trait descriptor	Frequency (%)			
		Group 1	Group 2	Group 3	Group 4
Immature fruit color	Yellow	55,4	30,3	0	0
	Mustard yellow	38,4	67,2	100	0
	Green	5,1	1,2	0	100
	Green-yellow	1,1	1,2	0	0
Ripe color fruit	Yellow	3,4	0,7	0	100
	Red-orange	96,6	99,0	100	0
	Red	0	0,3	0	0
Presence of fiber in inflorescence	25%	83,6	92,1	42,9	66,7
	50%	14,4	7,5	57,1	22,2
	75%	2,0	0,3	0	11,1
Prolificity	Presence	6,7	3,7	14,3	0
	Absence	93,3	96,3	85,7	100
Hermaphrodite	Presence	8,4	6,2	0	11,1
	Absence	91,6	93,8	100	88,9

Descriptors used for the Nolí palm (*Elaeis oleifera*) work collection in Corporación Colombiana de Investigación Agropecuaria, Corpoica, El Mirador - Tumaco, Colombia.

Group 2: Consists of 35 accessions representing 59.3% of the American oil palm population. The palms of this group are characterized by the following traits: Those palms which were obtained by controlled crossing amongst other selected palms in cross-pollination populations. In immature fruit bunch stage, 67.3% of the American oil palm fruit bunches produce mustard yellow fruit, yellow fruit (30.3%), (1.2%) green, and yellow-green (1.2%). Of these fruit arrangement, though it is considered as a (99%) mature red-orange, yellow (0.7%) and (0.3%) red. (Figure 4). However, 7.6% of inflorescences, performed 50% coverage and 0.3% had 75% inflorescence coverage.

Group 3: This group of two accessions obtained by controlled crossing were located. They represent 3.4% of the population. The two accessions are characterized by the following traits: unripening fruit bunches perform yellow mustard (100%) whose fruit ripening is red-orange color(100%). 57.1% of the American oil palms from these two accessions, had female inflorescences with more fiber around, covering 50% of the inflorescence, while the remaining 42.9% emit 25% fiber around the inflorescence, it allows 75% of the inflorescence (Table 4), had prolific trait and not performs hermaphrodite inflorescences, the rest, is identified as normal. (Figure 4).



Figure 4. Fruit and fruit bunch development and growth stage of Nolí palm. a). Prolificacy of Nolí palm: two inflorescences on leaf axil. b). Normal: one inflorescences per leaf axil. c). 50% of fibers in cluster formed. d). 50% of fibers in cluster formed

Group 4: This group represents one obtained accession by controlled crossing among selected palms in cross-pollination populations in full plant breeding program. The American oil palms of this accession, in unripening fruit stage, produce fruit bunches with green color (100%), which become yellow (100%) at total fruit ripening stage. In addition, the American oil palms of groups 1 and 2, emit low-fiber female inflorescences around, only covers 25% of the inflorescence, 11.1% had hermaphrodite inflorescences. (Figure 4).

Conclusion

Morphological characterization of 59 accessions provides more accurate and reliable estimates of the American oil palm variability in the germplasm collection existing in El Mira Corpoica and its close relation among accessions in 4 cluster groups which were generated by affinity.

Therefore, from 13 qualitative descriptors evaluated, five, had a high discriminant power: type of reproduction, color of unripening fruit bunch and color of ripening fruit bunch, envelopes percentage of fibers and exposure percentage of inflorescences. In the work collection of Nolí palm, easy observation descriptors were used and facilitate a more precise understanding of low phenotypic variability performed in the 59 evaluated accessions. Specifically, a characterization with quantitative production has become imperative due to the variability observed in the work collection of Nolí palm.

References

- Alvarado, A., & Sterling, F. (2004). Desarrollo de variedades de palma de aceite para condiciones climáticas extremas. *Palmas*, 25(supl.), 22-31.
- Barcelos, E., Amblard, P., Berthaud, J., & Seguin, M. (2002). Genetic diversity and relationship in American and African oil palm as revealed by RFLP and AFLP molecular markers. *Pesq Agropec Bras*, 37(8), 1105-1114.
- Barcelos, E., Rios, S., & de A-Cunha, R.N.V. (2015). Oil palm natural diversity and the potential for yield improvement. *Front Plant Sci*, 6, 190. <http://doi.org/10.3389/fpls.2015.00190>
- Bastidas, P.S., & Hurtado, C. L. (1993). Evaluación de palmas prolíficas en la especie *Elaeis oleifera* e híbridos interespecíficos *E. oleifera* x *E. guineensis*. *Palmas*, 14(4), 55-60.
- Corley, R.H.V., & Tinker, P.B. (2003). *The Oil Palm*. 4 th. Edition. Hoboken: Blackwell Science (Eds.). p.534.
- Dransfield, J., Uhl, N.W., Asmussen, C.B., Baker, W.J., Harley, M.M., & Lewis, C.E. (2005). A new phylogenetic classification of the palm family, Arecaceae. *Kew Bulletin*, 60(4), 559-569.
- Dransfield, J., Uhl, N. W., Asmussen, C. B., Baker, W. J., Harley, M. M., & Lewis, C. E. (2008). *Genera Palmarum: The evolution and classification of Palms*. Royal Botanic Gardens (Eds.). UK. 732 pp.
- Miranda, I.P., Rabelo, A., Bueno, C.R., Barbosa, E.M., & Ribeiro, M.N. (2001). Frutos da palmeiras da Amazônia. MCT INPA (Eds.). Manaus. pp120.
- Moreno, L.P., & Romero, H.M. (2015). Phenology of the reproductive development of *Elaeis oleifera* (Kunth) Cortes. *Agron Colomb*, 33(1), 36-42. <http://doi.org/10.15446/agron.colomb.v33n1.47199>
- Moretzsohn, M.C., Ferreira, M.A., Amaral, Z.P.S., Coelho, P.J.A., Grattapaglia, D., & Ferreira, M.E. (2002). Genetic diversity of Brazilian oil palm (*Elaeis oleifera* HBK) germplasm collected in the Amazon Forest. *Euphytica*, 124(1), 35-45. <http://doi.org/10.1023/A:1015606304653>
- Ooi, S.C., Da Silva, E.B., Müller, A.A., & Nascimento, J.C. (1981). Oil palm genetic resources-native *E. oleifera* populations in Brazil offer promising sources. *Pesq Agropec Bras*, 16(3), 385-395.
- Rey, L., Gómez, P., L., Ayala, I., Delgado, W., & Rocha, P. (2004). Colecciones genéticas de palma de aceite *Elaeis guineensis* (Jacq.) y *Elaeis oleifera* (H.B.K.) de Cenipalma: Características de importancia para el sector palmicultor. *Palmas*, 25(Supl.), 39-48.
- Seng, T.K. (1983). *Elaeis oleifera* – American oil palm. In: *The botany of oil palm*. The incorporated Society of planters, Kuala Lumpur (Eds.), Malaysia. pp 26-30.
- Sevilla, R. (2006). Manual para caracterización *in situ* de cultivos nativos: conceptos y procedimientos: definiciones conceptuales básicas. Lima, PE, INIEA (Eds.), pp 17-25.
- Zaki, N. M., Ismail, I., Rosli, R., Chin, T. N., & Singh, R. (2010). Development and characterization of *Elaeis oleifera* microsatellite markers. *Sains Malaysiana*, 39(6), 909-912.