

# Biological fixation of nitrogen by native isolates of *Rhizobium* sp. symbionts of *Leucaena leucocephala* (Lam.) De Wit

## Fijación biológica de nitrógeno por aislados nativos de *Rhizobium* sp. simbioses de *Leucaena leucocephala* (Lam.) de Wit

Juan Guillermo Cubillos-Hinojosa<sup>1,3</sup> \*, Pablo Ernesto Milian Mindiola<sup>2</sup>,  
Jorge Luis Hernández Mulford<sup>3</sup>, Arnaldo Peralta Castilla<sup>4</sup>

<sup>1</sup>Profesor Asistente, Programa de Microbiología, Universidad Popular del Cesar. <sup>2</sup>Instructor de Microbiología, Servicio Nacional de Aprendizaje – SENA Bogotá D.C. <sup>3</sup>Investigador Grupo de Investigación en Microbiología Agrícola y Ambiental - MAGYA, Universidad Popular del Cesar. <sup>4</sup>Profesor Asociado, Facultad de Ciencias Básicas y de la Educación, Universidad Popular del Cesar. \*Autor para correspondencia: [juancubillos@unicesar.edu.co](mailto:juancubillos@unicesar.edu.co)

Rec.: 2017-12-08 Acep.: 2019-04-09

### Abstract

Forage legumes such as *Leucaena leucocephala*, besides being a rich source of protein for animal feed, its inclusion in silvopastoral systems provides fundamental components to improve soil properties. These plants have the ability to establish symbiotic association with the genus *Rhizobium* sp. and fix biologically atmospheric nitrogen favoring growth and development, being reflected in production increases. The objective of this research was to evaluate the capacity of native isolates of *Rhizobium* sp. and a commercial strain in biological nitrogen fixation (BNF) in *L. leucocephala* plants. Two separate bioassays to evaluate the efficiency of the FBN of the native isolates and the commercial strain under greenhouse conditions, followed by a randomized complete block design with 7 x 2 factorial arrangement, seven treatments, two factors: native isolates and commercial strains and bacterial concentrations ( $10^6$  and  $10^8$  cells.mL<sup>-1</sup>), with three repetitions and five experimental units. The first bioassay was carried out with seeds, determining the percentage of germination, the length and thickness of the stem, number of leaves, dry weight of the aerial part, number of nodule/plant and the percentage of nitrogen accumulated in the area part of the plant. In the second bioassay with 30-day-old seedlings, the same variables of the first bioassay were determined, with the exception of the percentage of germination. In the first bioassay, a greater stimulation was found in the germination of *L. leucocephala* seeds at a concentration of 108 cells.mL<sup>-1</sup>. Regarding stem length and thickness, accumulated dry matter, leaf development and nitrogen accumulation, better results were found in the treatments with the native isolates L27, L36 and L38 in a concentration of 106 cells.mL<sup>-1</sup> above the commercial strain in concentration of 108 cells.mL<sup>-1</sup>. The native isolates of *Rhizobium* sp. exert a positive effect on the FBN and the germination of plants of *L. leucocephala*, which will allow to conduct future field studies that allow to potentiate the culture of *L. leucocephala* and silvopastoral systems for bovine feeding.

**Key words:** *Leucaena leucocephala*, biological nitrogen fixation, forage legumes, *Rhizobium* sp.

### Resumen

Las leguminosas forrajeras como *Leucaena leucocephala*, cuando son incluidas en sistemas silvopastoriles, además de ser una fuente rica en proteínas para la alimentación animal, aportan componentes fundamentales para mejorar las propiedades del suelo. Estas plantas poseen la habilidad de establecer asociación simbiótica con el género *Rhizobium* sp. y fijan biológicamente nitrógeno atmosférico favoreciendo el crecimiento y el desarrollo de la planta, lo que contribuye al incremento de la producción. El objetivo de esta investigación fue evaluar la capacidad de aislados nativos de *Rhizobium* sp. y una cepa comercial en la fijación biológica de nitrógeno (FBN) en plantas de *L. leucocephala*. Para el efecto en condiciones de invernadero se realizaron sendos bioensayos por separado con el fin de evaluar la eficiencia de la FBN de los aislados nativos y una cepa comercial, bajo un diseño experimental de bloques completos al azar con arreglo factorial 7 x 2, dispuestos en siete tratamientos y dos factores: aislados nativos y cepas comerciales y las concentraciones de bacterias ( $10^6$  y  $10^8$  células.mL<sup>-1</sup>), con tres repeticiones y cinco unidades experimentales. El primer bioensayo se realizó con semillas, para medir el porcentaje de germinación, la longitud y grosor del tallo, el número de hojas, el peso seco de la parte aérea, el

número de nódulo/planta y el porcentaje de nitrógeno acumulado en la parte aérea de la planta. En el segundo bioensayo se utilizaron plántulas de 30 días de edad y se determinaron las mismas variables del primero, con excepción del porcentaje de germinación. En el primer bioensayo se encontró una mayor estimulación en la germinación de semillas de *L. leucocephala* en concentración de  $10^8$  células.mL<sup>-1</sup>. Para la longitud y grosor del tallo, la materia seca acumulada, el desarrollo foliar y la acumulación de nitrógeno, se encontraron mejores resultados en los tratamientos con los aislados nativos L27, L36 y L38 en concentración de  $10^6$  células.mL<sup>-1</sup> siendo superiores a los resultados encontrados con la cepa comercial en concentración de  $10^8$  células.mL<sup>-1</sup>. Los aislados nativos de *Rhizobium* sp. ejercen un efecto positivo en la FBN y la germinación de plantas de *L. leucocephala*, lo que permitirá conducir futuros estudios en campo que permitan potencializar el cultivo de esta especie y sistemas silvopastoriles para la alimentación bovina.

**Palabras clave:** *Leucaena leucocephala*, fijación biológica de nitrógeno, leguminosas forrajeras, *Rhizobium* sp.

## Introduction

Livestock, along with commercial crops are the most economically profitable activities after mining in Cesar State (Colombia), located at northwest of the Colombian Caribbean; making the region one of the most important in meat and dairy production (Fedegan, 2014). The production depends mainly on the grazing of native and introduced pastures; however, in recent years, systems have been developed for the integral management of forage legumes such as *Leucaena leucocephala* commonly known as 'leucaena', *Gliricidia sepium* ('matarratón'), among other associated with these grasses, because the soil conditions of the area limit the availability and quality of the forage during prolonged periods of the year. (Portilla et al., 2015).

The cattle demand large amounts of grass and forage to maintain a good diet, however the region presents shortages in dry season and even more with the climate effect leading a poor performance in body mass, reproduction and production of milk and meat. To work against forages demand, *L. leucocephala* crops are an alternative because the foliage of this legume presents high concentrations of raw protein, energy and digestibility by cattle (Pedraza et al., 2001; Mahecha, 2002; Rey et al., 2005; Diouf et al., 2008; Murgueitio et al., 2016).

In addition, it is believed that the implementation of silvopastoral and agroforestry systems provide fundamental components to improve the physical, chemical and biological conditions of the soil (Bueno and Camargo, 2015, Chará et al., 2015), due to the ability to fix atmospheric nitrogen (N<sub>2</sub>). This leaves aside the indiscriminate use of synthetic fertilizers that have generated a negative impact on the soil ecology, what has currently manifested in erosion, desertification and impoverishment of vegetation cover (Mahecha, 2002).

Therefore, the ability of legumes in nitrogen fixation it's given by the association with native soil bacteria of *Rhizobium* sp. genus, which allows it to capture through nodular symbiosomes all the necessary nitrogen for its biochemical reactions and cellular constitution. Besides, the legumes allow an increase in the availability of fixed nitrogen in the soil to other nearby plants and future crop rotations (Döbereiner, 1997; Ferrera and Alarcón, 2007; Mahecha, 2002).

Different research has shown the biopromotor potential of *Rhizobium* sp. to be associated symbiotically with this type of plants in structures called nodules (Stacey, 2007, Rosales and Pinzon, 2005). The isolation of native bacteria of *Rhizobium* sp. for the biological inoculant production is an economic and ecological alternative to ensure and recover the productivity of the soils, reducing the indiscriminate use of chemical fertilizers. This rhizobacteria, in addition to fixing nitrogen produce phytohormones, participate in the solubilization of phosphorus and antagonistic reaction, allowing a greater productivity of the host legume plant in any type of soil (Akhtar and Siddiqui, 2009; Santillana et al., 2005; Mourad et al., 2009; Bardin et al., 2004; Puertas et al., 2006; Ahemad and Kibret, 2014, Mabrouk et al., 2018).

The search for native isolates of *Rhizobium* sp. efficient, with the capacity to supply the nitrogen needs for the development of the plants, it is very important for its introduction as an inoculant for a certain crop. Therefore, the objective of this research was to evaluate the capacity of native isolates of *Rhizobium* sp. and a commercial strain in biological nitrogen fixation in *L. leucocephala* plants under greenhouse conditions, which can be recommended for field studies and subsequently consolidate a biological inoculant based on these bacteria for the

production of forages and silvopastoral systems of the region.

## Materials and methods

This research was conducted in the Microbiology Laboratory and greenhouse of the “Centro Biotecnológico del Caribe”, located in Valledupar (Colombia) at Km 7 via La Paz, with a geographic location of 10 ° 27' 20" north latitude, 73 ° 15' 30" west longitude, with an average temperature of 28.4 °C and a height of 168 m.a.s.n., annual precipitation of 961 mm and relative humidity of 67%. In the area, the wind speeds reach 14.76 km/h; rainfall is moderate, distributed between April and November with maximum in May and October, this provides a slightly warm climate (IDEAM, 2018).

### Seed bioassay

**Seed germination.** Bags with 1 kg of soil previously autoclaved at 121 °C, 15 PSI for 15 min were used. Three *L. leucocephala* seeds were sown at a depth of 2 cm previously disinfected with 70% iodine, 1% hypochlorite and alcohol at 70% (Cubillos-Hinojosa et al., 2011). The *Rhizobium* sp. native were isolated by Hernández et al. (2012) from nodules of young plants located in the native forest of the Centro Biotecnológico del Caribe in Valledupar (Colombia), while the commercial strain was obtained from the Rhizobiol © inoculant.

The inoculation was performed aseptically applying 2 ml of the respective bacterial suspensions ( $10^6$  and  $10^8$  cells.mL<sup>-1</sup>) of each of isolates and strains of *Rhizobium* sp. The commercial strain Rhizobiol © prepared from pure cultures by counting in Newbauer chamber applying the inoculum directly on the seed. The control treatment was only added 2 mL of sterile distilled water. The Germination Percentage (GP) was determined daily from day zero until the day on which the last seedling emerged (Cubillos-Hinojosa et al., 2011).

**Evaluation of BNF efficiency of *Rhizobium* sp. in seeds.** After 2 weeks of germination percentage was determined, the seedlings were thinned, leaving in each pot the most vigorous (Mora, 1995; Matos et al., 1998). The seedlings were kept under greenhouse conditions, with moisture of 70% - 80%, temperature of 31 - 34°C where the air volume, brightness and attack by pests are controlled and the irrigation was sprayed twice daily for 2 hours. After 38 days the stem length (SL) with a tape measure, stem diameter (SD) with vernier caliper, the number of true leaves (NTL) and dry weight of the aerial part (WAP) were measured based on the methodology

proposed by Reyes et al. (2008). The number of nodules/plant (NNP) and leaf nitrogen percentage by the Kjeldhal method was determined. After 30 days, the inoculation was made carefully removing the soil at the level of the base of the stem and adding 2 mL of the respective bacterial suspensions ( $10^6$  and  $10^8$  cells.mL<sup>-1</sup>), of each of the isolates of *Rhizobium* sp., and the commercial strain Rhizobiol© (Matos and Zúñiga, 2002).

### Seedlings bioassay

**Evaluation of BNF efficiency of *Rhizobium* sp. in seedlings.** Bags with 1 kg of soil previously autoclaved at 121°C, 15 PSI for 15 min were used. Three *L. leucocephala* seeds were sown at a depth of 2 cm, previously disinfected and subjected to pretreatment in sterile distilled water for 2 hours before sowing. After two weeks of germination percentage was determined, the seedlings were thinned leaving in each pot the most vigorous (Mora, 1995; Rincón, 2000). The control treatment was only added 2 mL of sterile distilled water. After 18 days, the measurements of the variables evaluated of the first bioassay were made.

### Experimental design

In both bioassays, a randomized complete block design 7 x 2 with factorial arrangement, seven treatments, taking as a factor the native isolates and the commercial strain Rhizobiol ©, in two bacterial concentrations ( $10^6$  and  $10^8$  cells.mL<sup>-1</sup>).

The results in Excel were organized and the averages were compared using Duncan's multiple range test ( $P \leq 0.05$ ), ANOVA (Analysis of Variance) using the statistical package Statgraphics plus version 5.1 and verified with the statistical package SPSS 15 version.

## Results and discussion

### Germination percentage accumulated in seeds

Table 1 shows that the native *Rhizobium* sp. isolates specific for leucaena produce a positive effect on seed germination under greenhouse conditions, achieving a germination percentage equivalent to 100% in the treatments L38-106 and L38- 108.

Meanwhile, all the treatments inoculated with the concentrations of  $10^8$  cells.mL<sup>-1</sup> (CC-108, L27-108, L32-108, L34-108, L35-108 and L38-108) presented a 100% in the accumulated germination, except of L36-108 (93.3%), compared to control (86.7%) (Table 1). All the treatments showed superiority except for the commercial

strain (CC-106), L34-106 and L36-106, which showed similar results to control, and L27-106 (80%) showed accumulated germination lower than the control.

Similar results were found by Reyes et al. (2008) that evaluated the effect of two isolates of rhizobacteria, belonging to the genus *Rhizobium* on germination and growth in paprika (*Capsicum annuum*) and maize (*Zea mays*). Also were found favorable results in paprika seeds germination after being inoculated with one of the two isolates of *Rhizobium* sp., at a concentration of  $10^7 - 10^8$  cells.mL<sup>-1</sup>, that generated 82% with respect to the control 71%, increasing by 11% compared to this.

**Table 1.** Germination percentage accumulated in seeds of *L. leucocephala* within 14 days after inoculation

| Treat-<br>ment | Day  |      |      |      |      |      |      |
|----------------|------|------|------|------|------|------|------|
|                | 4    | 5    | 6    | 7    | 8    | 9    | 14   |
| L27-106        | 6,7  | 20   | 33,3 | 53,3 | 60   | 80   | 80   |
| L32-106        | 20   | 46,7 | 66,7 | 73,3 | 80   | 93,3 | 93,3 |
| L34-106        | 6,7  | 40   | 46,7 | 80   | 86,7 | 86,7 | 86,7 |
| L35-106        | 20   | 60   | 60   | 86,7 | 93,3 | 93,3 | 93,3 |
| L36-106        | 0    | 33,3 | 33,3 | 46,7 | 66,7 | 86,7 | 86,7 |
| L38-106        | 20   | 53,3 | 66,7 | 80   | 86,7 | 93,3 | 100  |
| CC-106         | 0    | 0    | 40   | 40   | 46,7 | 60   | 86,7 |
| L27-108        | 33,3 | 53,3 | 60   | 73,3 | 80   | 93,3 | 100  |
| L32-108        | 20   | 40   | 60   | 73,3 | 100  | 100  | 100  |
| L34-108        | 13,3 | 40   | 80   | 80   | 100  | 100  | 100  |
| L35-108        | 0    | 53,3 | 93,3 | 93,3 | 100  | 100  | 100  |
| L36-108        | 6,7  | 46,7 | 53,3 | 60   | 73,3 | 86,7 | 93,3 |
| L38-108        | 6,7  | 40   | 53,3 | 80   | 86,7 | 86,7 | 100  |
| CC-108         | 0    | 0    | 6,7  | 33,3 | 46,7 | 100  | 100  |
| Control        | 13,3 | 26,7 | 40   | 46,7 | 60   | 73,3 | 86,7 |

Additionally, these results are consistent with those obtained by Dobbelaere et al. (2003) that highlighted the importance of the bacteria belonging to *Rhizobium*, *Azotobacter* and *Azospirillum* genus, their action as plant growth promoting bacteria by producing phytohormones such as auxins, cytokinins, gibberellins and the ACC (1-Aminocyclopropane-1-Carboxylate) Deaminase enzyme; which promotes root development and plant growth. This occurs due to an increase in cell division promoting the formation of radical hair and, consequently, resistance to osmotic stress due to an increase in chlorophyll, K, Ca, soluble sugars and protein content (Kennedy et al., 2004).

### Evaluation of BNF efficiency of *Rhizobium* sp. in seeds

For the stem length (SL), analysis of variance showed that treatments L35-106 (35.23 cm), L38-106 (34.1 cm), L27-106 (32.27 cm) and L34-

106 (31.03 cm), presented significant differences with respect to the control (19.63 cm) and the commercial strain CC-108 (22.7 cm) and CC-106 (23.7 cm). Also, there are statistically significant differences according to Duncan ( $P \leq 0.05$ ), between concentrations for the treatments L34-106 (31.03 cm), L34-108 (23.6 cm), L35-106 (35.23 cm), L35 -108 (26.8 cm), L36-106 (27.0 cm), L36-108 (21.67 cm), L38-106 (34.1 cm) and L38-108 (26.67 cm), achieving that the concentration  $10^6$  cells.mL<sup>-1</sup>, had greater effect in terms of stem length (Table 2). These results were higher than found by Rincon et al. (2000), that obtained *L. leucocephala* seedlings with a maximum height of 23.88 cm at 90 days of age, after inoculation in seeds with *Rhizobium* sp. native isolates.

The results were homogeneous among all the treatments to the stem diameter (SD) and the number of true leaves (NTL), except for the control (1.50 mm), for the case of SD that showed statistically significant differences according to Duncan ( $P \leq 0.05$ ), with all treatments, however the highest values were corresponding to L36-106 (2.40 mm), L35-106 (2.40 mm), L34-106 (2.47 mm) and L38-106 (2.50 mm), being this the highest value. For NTL, only L38-108 (25.33), L38-106 (25.67), L34-106 (25.67), L35-106 (26.67) and L34-108 (27.0) showed significant differences with respect to control (18.0), but not compared to commercial strain CC-106 and CC-108 with values of 21.0 in both cases. According to this, it can be affirmed that the SD and NTL did not represent in great magnitude the behavior of each one of the strains; contrasting with the SL in which it was observed, differences between treatments (Table 2).

The dry weight of the aerial part (WAP) in treatments L36-106 (1.73 g) and L27-106 (1.97 g) presented the highest values, showing highly significant differences ( $P \leq 0.05$ ), with respect to the control (0.803 g) and the commercial strain CC-106 and CC-108 with respective values of 1.23 g and 1.33 g, that in turn also presented statistically significant differences compared to control. According to the concentration, significant differences were found (Table 2) between L27-106 (1.97 g) and L27-108 (1.30 g), L36-106 (1.73 g) and L36-108 (1.03 g), given that for these strains the concentration  $10^6$  cells.mL<sup>-1</sup>, gave better results. Similar results were found by Matos and Zúñiga (2002) that obtained an increase in the aerial dry matter of pal-ICA 450 (*Phaseolus lunatus* L.), after inoculation in seed, with native isolates of *Rhizobium* sp., in comparison with the control.

Relating to the number of nodules/plant (NNP) and nitrogen percentage (%N), the analysis of

variance indicated better results for L35-108 (13.67), L38-108 (14.0), L34-106 (15.33) and L27-108 (24.67), that presented differences statistically significant ( $P \leq 0.05$ ) with respect to the control that did not present nodulation; and commercial strain CC-108 and CC-106 with value of 1.33 in both cases. Only L27-108, presented significant differences with all treatments. The average nodulation for all treatments was 12.09 nodules/plant (Table 2). These results are similar to those found by Rincón et al. (2000), that obtained an average nodulation of 18.25 nodules/plant, in leucaena plants after being inoculated with *Rhizobium* sp., native isolates, for a period of 90 days.

**Table 2.** Average of the BNF variables in the greenhouse bioassay with seeds after 38 days.

| Treat-ments | SL (cm)  | SD (mm) | NTL     | WAP (g) | NNP      | %N     |
|-------------|----------|---------|---------|---------|----------|--------|
| L27-106     | 32,27fg  | 2,30b   | 24,0ab  | 1,97d   | 10,33bcd | 1,811c |
| L27-108     | 29,0def  | 2,33b   | 22,33ab | 1,30c   | 24,67e   | 1,454b |
| L32-106     | 25,93bcd | 2,23b   | 21,67ab | 1,03abc | 6,0ab    | 1,791c |
| L32-108     | 28,63def | 2,37b   | 24,0ab  | 1,27c   | 7,67bc   | 1,724c |
| L34-106     | 31,03efg | 2,47b   | 25,67b  | 1,30c   | 15,33d   | 1,047a |
| L34-108     | 23,6abc  | 2,13b   | 27,0b   | 1,33c   | 11,33bcd | 1,132a |
| L35-106     | 35,23g   | 2,40b   | 26,67b  | 1,20bc  | 12,33bcd | 1,181a |
| L35-108     | 26,8cde  | 2,20b   | 22,0ab  | 0,87ab  | 13,67cd  | 1,148a |
| L36-106     | 27,0cde  | 2,40b   | 23,0ab  | 1,73d   | 11,0bcd  | 1,064a |
| L36-108     | 21,67ab  | 2,20b   | 20,67ab | 1,03abc | 9,67bcd  | 1,177a |
| L38-106     | 34,1g    | 2,50b   | 25,67b  | 1,13abc | 9,0bcd   | 2,004d |
| L38-108     | 26,67cde | 2,27b   | 25,33b  | 1,33c   | 14,0cd   | 1,413b |
| CC-106      | 23,7abc  | 2,23b   | 21,0ab  | 1,23bc  | 1,33a    | 1,424b |
| CC-108      | 22,7abc  | 2,23b   | 21,0ab  | 1,33c   | 1,33a    | 1,771c |
| Control     | 19,63a   | 1,50a   | 18,0a   | 0,803a  | 0,0a     | 1,083a |

L: native isolate of *Rhizobium* sp., symbiont of *L. leucocephala*; CC: commercial strain.  $106$  y  $108 = 10^6$  y  $10^8$  cells.mL<sup>-1</sup>; SL: Stem length; SD: Stem diameter; NTL: Number of true leaves; WAP: Dry weight of the aerial part; NNP: number of nodules/plant; %N: Nitrogen percentage.

Equal letters in the same column form a group of means between which there is no statistically significant differences according to Duncan ( $P \leq 0.05$ ).

However, the results in terms of %N, indicate better results in the concentration  $10^6$  cells.mL<sup>-1</sup>, being the best treatments: L32-106 (1,791), L27-106 (1,811) and L38-106 (2,004), that presented significant differences ( $P \leq 0.05$ ) compared to the control (1,083) and the commercial strain CC-106 (1,424). For CC-108 (1,771) good results were found and do not present significant differences with the best treatments with the exception of L38-106 (2,004), that gave the highest value. In addition, L34-106 (1,047), L36-106 (1,064), L34-108 (1,132), L35-108 (1,148), L36-108 (1,177) and L35-106 (1,181), did not present significant differences relative to control (1,083), but differ statistically with the commercial strain

at both concentrations (Table 2). With the above, it is infer that the bacterial concentration is relate to the levels of nodulation, the greater the concentration the higher the nodulation level, but this variable does not determine the process of biological nitrogen fixation (BNF). For L32-106 (1,791), L27-106 (1,811) and L38-106 (2,004) nodulation levels were on average with respective values of 6, (10,33 and 9.0) compared to L27-108 (1,454), that presented the highest nodulation level. These results are contrary to those reported by Matos and Zuniga (2002) in *P. lunatus*, where they stated that more nodules would imply an increase in nitrogen fixation capable of growth stimulation. This research found that the ability of the strains to form nodules, not necessarily indicated efficiency BNF; for each legume-*rhizobium* combination, the optimal level of nodulation was different. However, abundance, size, distribution and internal coloration of the nodules were important indicators of their effectiveness or ability to fix nitrogen (Mora, 1995).

### Evaluation of BNF efficiency of *Rhizobium* sp. in seedlings

Analysis of variance for stem length (SL), indicated better results for treatments L35-106 (39.37 cm), L32-106 (39.90 cm), L38-106 (40.93 cm), L27 -106 (42.10 cm), L36-106 (43.27 cm) and L34-106(44.33 cm) being this the highest value; which presented highly significant differences ( $P \leq 0.05$ ) with respect to the control (25.33 cm), CC-106 (31.43 cm) and CC-108 (34.97 cm) (Table 3).

In addition, the best treatments also showed significant differences with L38-108 (26.37 cm) and L35-108 (30.0 cm), indicating that the lowest cell concentration ( $10^6$  cells.mL<sup>-1</sup>) (Figure 1) generated better results in terms of stem length; even the six best treatments were in this concentration. Therefore, they did not present statistically significant differences among themselves ( $P \leq 0.05$ ) (Table 3).

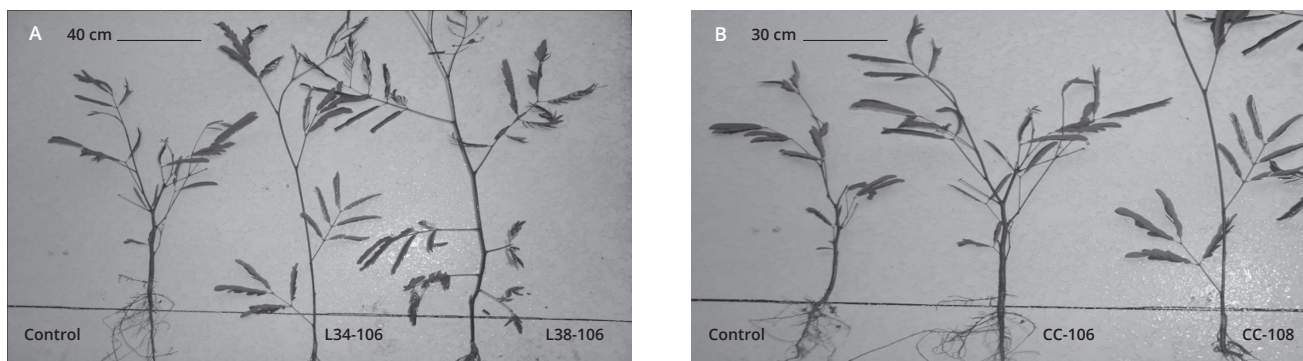
Regarding to the stem diameter (SD), it was found that the native isolates of *Rhizobium* sp., being a positive effect in this variable in comparison with the control, however, the analysis of variance, yields only significant differences for L38- 106 (3.10 mm), L36-106 (3.20 mm), CC-106 (3.27 mm), L34-106 (3.30 mm), L27-106 (3.30 mm) and CC- 108 (3.33 mm), (appearing as the highest value); with respect to the control (2.57 mm) ( $P \leq 0.05$ ) (Table 3).

On the other hand, results obtained in the number of true leaves (NTL) contrast with those obtained in the variables SL and SD. The treatments L27-106 (32.0), L36-106 (34.33) and L34-106 (36.33), which presented better results

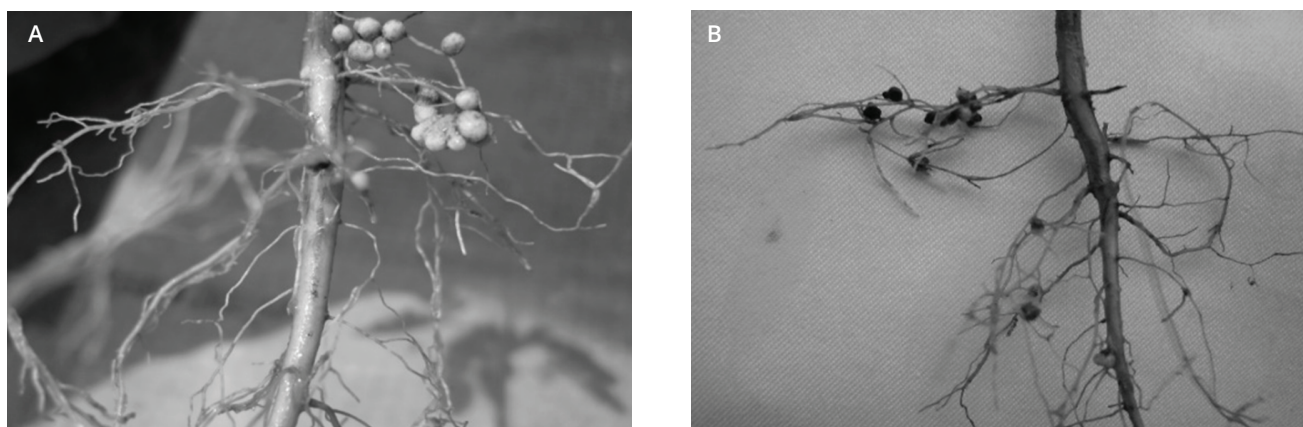
**Table 3.** Average of the BNF variables in the greenhouse bioassay with seedlings after 48 days.

| Treatments | SL (cm)    | SD (mm)   | NTL     | WAP (g) | NNP       | %N          |
|------------|------------|-----------|---------|---------|-----------|-------------|
| L27-106    | 42,10fgh*  | 3,30de    | 32,0cd  | 0,63ab  | 16,33g    | 1,38bc      |
| L27-108    | 34,23bcde  | 2,80abcd  | 29,33bc | 0,53ab  | 14,67fg   | 1,00ab      |
| L32-106    | 39,90defgh | 2,93abcde | 31,33cd | 0,67ab  | 12,0def   | 1,6c        |
| L32-108    | 37,57cdefg | 2,80abcd  | 30,33c  | 0,52ab  | 4,0b      | 1,74cd      |
| L34-106    | 44,33h     | 3,30de    | 36,33d  | 0,60ab  | 10,0cde   | 1,78cd      |
| L34-108    | 36,30bcdef | 2,82abcd  | 32,33cd | 0,48a   | 9,67cde   | 1,41bc      |
| L35-106    | 39,37defgh | 3,0abcde  | 29,33bc | 0,76bc  | 13,67efg  | 1,41bc      |
| L35-108    | 30,0ab     | 2,77abc   | 24,67ab | 0,56ab  | 9,0cd     | 1,32<br>abc |
| L36-106    | 43,27gh    | 3,20bcde  | 34,33cd | 0,65ab  | 7,33bc    | 2,14d       |
| L36-108    | 33,53bcd   | 2,70ab    | 30,33c  | 0,57ab  | 8,63cd    | 1,44bc      |
| L38-106    | 40,93efgh  | 3,10bcde  | 32,33cd | 0,93c   | 9,67cde   | 3,24e       |
| L38-108    | 26,37a     | 3,03abcde | 23,33a  | 0,573ab | 12,67defg | 1,68c       |
| CC-106     | 31,43ab    | 3,27cde   | 29,33bc | 0,47a   | 4,67b     | 1,03ab      |
| CC-108     | 34,97bcde  | 3,33e     | 31,33cd | 0,58ab  | 10,67cde  | 1,08ab      |
| Control    | 25,33a     | 2,57a     | 29,67bc | 0,42a   | 0,0a      | 0,887a      |

L: native strain of *Rhizobium* sp., symbiont of *L. leucocephala*; CC: commercial strain. 106 y 108 =  $10^6$  y  $10^8$  cells.mL<sup>-1</sup>; SL: Stem length; SD: Stem diameter ; NTL: Number of true leaves; WAP: Dry weight of the aerial part; NNP: number of nodules/plant; %N: Nitrogen percentage. \*Equal letters in the same column form a group of means between which there is no statistically significant differences according to Duncan ( $P \leq 0.05$ ).



**Figure 1.** Seedlings of *L. leucocephala* after being inoculated with the native isolates of *Rhizobium* sp. (A) L34-106 and L38-106 in comparison with the control. (B) Strain commercial CC-106 and CC-108 compared to the control.



**Figure 2.** Nodulation in *L. leucocephala* seedlings. (A) Located nodulation for test seedlings, (B) Nodulation distributed around the root system, for testing seed.

in relation to the aforementioned variables; they differ from the control (29,67) (Table 3), however only in the last of the treatments (L34-106: 36,33), there are statistically significant differences with respect to this.

For the dry weight of the aerial part (WAP) the behavior of the different treatments was homogeneous, only significant differences ( $P < 0.05$ ) were found in L35-106 (0.763 g) and L38-106 (0.930 g); in relation to the control (0.420 g) (Table 3). Regarding CC-106 (0.467 g) and CC-108 (0.580 g), there were also statistically significant differences, except for L35-106, which only showed significant differences with CC-106.

Among the best treatments were also found L34-106 (0.60 g), L27-106 (0.627g), L36-106 (0.647g), L32-106 (0.667g); that in spite of being above the control and the commercial strain, they do not present statistically significant differences ( $P \leq 0.05$ ), with respect to these. It was also found that L34-108 (0.477 g), L32-108 (0.520 g), L27-108 (0.527 g), L35-108 (0.563 g), L36-108 (0.570 g) and L38-108 (0.573 g) presented the lowest values, giving statistically significant differences ( $P \leq 0.05$ ) compared to the best treatment (L38-106) (Table 3). These results were better than those reported by Weslermeyer (2006) that found that the inoculation of native isolates of *Rhizobium* sp. *leguminosarum* *bv.* *trifolii*, did not generate greater influence, in terms of the accumulation of dry matter in plants of White Clover (*Trifolium pratense*).

According to the number of nodules/plant (NNP) and nitrogen percentage (%N), the analysis of variance indicated for the first of the cases highly significant differences between all the native isolates, and the commercial strain with respect to the control that did not present nodulation. The highest values were L35-106 (13,67), L27-108 (14,67) and L27-106 (16,33), which showed statistically significant differences ( $P \leq 0.05$ ), with the treatments L32-108 (4,0), CC-106 (4,67), L36-106 (7,33), L36-108 (8,67) and L35-108 (9,0) (Figure 2).

It was observed that, in this analysis, that although the nodulation for L27-108 (14,67) and L27-106 (16,33) was the best, the results in terms of nitrogen percentage do not corroborate this information. In the statistical analysis for nitrogen percentage; it was found that the best isolate for this parameter was L38-106 (3,240) showing statistically significant differences with the rest of the treatments regarding this variable. However, this treatment has average levels of nodulation (9,67) (Graph 7). The commercial strain CC-106 and CC-108 showed respective values of 4,67 and 10,67 regarding the level of nodulation; and 1,027 and 1,080 in terms of

nitrogen percentage, presenting no significant differences with respect to the control 0,887.

According to the above, Rincon et al. (2000) found variability in the nodulation of *L. leucocephala* after being inoculated with native of *Rhizobium* sp. isolated from several points. This is because the genetic variability of the isolates can be manifested by the difference they exhibit competitive ability for sites nodule formation, which is determined by the interaction of the plant genome, the introduced isolate, population native and environmental factors. Due to the response to the inoculation and competitive success of each of the isolates is unknown, it is necessary to evaluate their fixation capacity first at the greenhouse level and later in the field (Mora, 1995).

The nitrogen percentage (%N) it was found that L34-106 (1,783), L36-106 (2,143) and L38-106 (3,240) presented highly significant differences with respect to L27-108 (1,003), CC -106 (1,027), CC-108 (1,08) and control (0,887), with better results in the concentration  $10^6$  cells.mL<sup>-1</sup>. With the above results, it is infer that the variables SL, SD, NTL and WAP, were influenced by the concentration factor, being the concentration  $10^6$  cells.mL<sup>-1</sup> the most successful. This can be the effect of the competition for nutrients and the root among the same bacterial population, thus slowing down the establishment process between the roots and the rhizobia, thus being able to be noticed in the development of the seedlings.

Additionally, the nodulation results allow to see that the bacterial concentration did not influence notably in the number of nodules with the exception of CC-108, L38-108 and L36-108, which show higher values in relation to the concentration  $10^6$  of the same native isolate. This is opposite to that thrown by the percentage of nitrogen, which highest values in the native isolates at a concentration of  $10^6$  cells.mL<sup>-1</sup> were presented, and statistically differ from the treatments with the commercial strain (Table 3).

## Conclusion

The native isolates of *Rhizobium* sp. are efficient in the biological fixation of nitrogen and in the stimulation of the germination of *Leucaena leucocephala*, obtaining a greater stimulus in concentrations of  $10^8$  cells.ml<sup>-1</sup>. The isolates L27, L36 and L38 were the most efficient, even in concentration  $10^6$  cells.mL<sup>-1</sup>, which will allow to conduct studies in the field that allow to potentiate the culture of *L. leucocephala* and silvopastoral systems for bovine feeding in the Caribbean Biotechnological Center and the Colombian Caribbean region.

## Acknowledgments

The authors thank Centro Biotecnológico del Caribe (CBC) where this research was developed, to Oscar Eduardo Trujillo Torres (R.I.P) for the contributions and to the Research Group Microbiología Agrícola y Ambiental – MAGYA of the Popular University of Cesar (Colombia) for technical support.

## References

- Ahemad, M. and Kibret, M. 2014. Mechanisms and Applications of Plant Growth Promoting Rhizobacteria: Current Perspective. *Journal of King Saud University-Science*, 26:1-20. doi: 10.1016/j.jksus.2013.05.001
- Akhtar, M. and Siddiqui, Z. 2009. Effects of phosphate solubilizing microorganisms and Rhizobium sp. on the growth, nodulation, yield and root-rot disease complex of chickpea under field condition. *African J. Biotechnol.* 8(15):3489-3496. In: <https://www.ajol.info/index.php/ajb/article/view/61833/49910>.
- Bardin, S. D.; Huang, H.-C.; Pinto, J.; Amundsen, E. J., and Erickson, R. S. 2004. Biological control of Pythium damping-off of pea and sugar beet by Rhizobium leguminosarum bv. viceae. *Canadian Journal of Botany*, 82(3), 291-296. doi:10.1139/b04-003
- Bueno López, L. y Camargo García, J. C. 2015. Nitrógeno edáfico y nodulación de Leucaena leucocephala (Lam.) de Wit en sistemas silvopastoriles. *Acta Agronómica*, 64(4):349-354. doi:10.15446/acag.v64n4.45362
- Chará, J.; Camargo, J. C.; Calle, Z.; Bueno, L.; Murgueitio, E.; Arias, L.; Dossman, M. A. y Molina, E. J. 2015. *Servicios ambientales de sistemas silvopastoriles intensivos: mejoramiento del suelo y restauración ecológica*. En: Sistemas Agroforestales. Funciones productiva, socioeconómica y ambiental. Cap.15. ISBN 978-958-9386-74-3. Pp 331-338.
- Cubillos-Hinojosa, J.G.; Milian-Mindiola, P.E. and Hernández-Mulford, J.L. 2011. Biological nitrogen fixation by *Rhizobium* sp. native gliricidia (*Gliricidia sepium* [Jacq.] Kunth ex Walp.) under greenhouse conditions. *Agronomía Colombiana* 29(3):465-472. Retrieved June 18, 2019, from [http://www.scielo.org.co/scielo.php?script=sci\\_arttext&pid=S0120-99652011000300016&lng=en&tlng=en](http://www.scielo.org.co/scielo.php?script=sci_arttext&pid=S0120-99652011000300016&lng=en&tlng=en).
- Diouf, A.; Diop, T. A.; Ndoeye, I. and Gueye, M. (2008). Response of *Gliricidia sepium* tree to phosphorus application and inoculations with *Glomus aggregatum* and rhizobial strains in a sub-Saharan sandy soil. *African Journal of Biotechnology*, 7(6):766-771.
- Döbereiner, J. 1997. Biological nitrogen fixation in the tropics: Social and economic contributions. *Soil Biology and Biochemistry*, 29(5-6), 771-774. doi:10.1016/s0038-0717(96)00226-x.
- Dobbelaere, S.; Vanderleyden, J., & Okon, Y. (2003). Plant Growth-Promoting Effects of Diazotrophs in the Rhizosphere. *Critical Reviews in Plant Sciences*, 22(2), 107-149. doi:10.1080/713610853.
- FEDEGAN Federación Colombiana de Ganaderos. Fondo Nacional del Ganado. 2014. *Ganadería regional visión 2014 -2018 Cesar*. Foro ganadería regional visión 2014 -2018 Cesar. Disponible en: <https://estadisticas.fedegan.org.co/DOC/download.jsp?pRealName=3.PlanCesarFINAL.pdf&idFiles=648>.
- Ferrera R. and A. Alarcón. 2007. *Fijación simbiótica de nitrógeno en leguminosas. Microbiología agrícola*. Primera edición, marzo 2007. Pp 225-236.
- Hernández, J. L.; Cubillos-Hinojosa, J. G., y Milian, P. E. 2012. Aislamiento de cepas de Rhizobium sp., asociados a dos leguminosas forrajeras en el Centro Biotecnológico del Caribe. *Rev. Col. Microb. Trop.* 2:51-62. En: [https://www.researchgate.net/publication/298069900\\_Aislamiento\\_de\\_cepas\\_de\\_Rhizobium\\_spp\\_asociados\\_a\\_dos\\_leguminosas\\_forrajeras\\_en\\_el\\_Centro\\_Biotecnologico\\_del\\_Caribe\\_Isolation\\_of\\_Rhizobium\\_spp\\_associated\\_two\\_forage\\_leguminous\\_in\\_the\\_Caribbean\\_Biotech](https://www.researchgate.net/publication/298069900_Aislamiento_de_cepas_de_Rhizobium_spp_asociados_a_dos_leguminosas_forrajeras_en_el_Centro_Biotecnologico_del_Caribe_Isolation_of_Rhizobium_spp_associated_two_forage_leguminous_in_the_Caribbean_Biotech).
- Instituto de Hidrología, Meteorología y Estudios Ambientales – IDEAM. 2018. Disponible en: <http://www.ideam.gov.co/documents/21021/418894/r%C3%ADsticas+de+Ciudades+Principales+y+Municipios+Tur%C3%ADsticos.pdf/c3ca90c8-1072-434a-a235-91baee8c73fc>.
- Kennedy, I. R.; Choudhury, A. T. M. A. and Kecskés, M. L. 2004. Non-symbiotic bacterial diazotrophs in crop-farming systems: can their potential for plant growth promotion be better exploited?. *Soil Biology and Biochemistry*, 36(8), 1229-1244. doi: 10.1016/j.soilbio.2004.04.006
- Mabrouk, Y.; Hemissi, I.; Salem, I. B.; Mejri, S.; Saidi, M. and Belhadj, O. 2018. Potential of Rhizobia in Improving Nitrogen Fixation and Yields of Legumes. *Symbiosis*. doi:10.5772/intechopen.73495.
- Mahecha L. 2002. El silvopastoreo: una alternativa de producción que disminuye el impacto ambiental de la ganadería bovina. *Revista Colombiana de Ciencias Pecuarias* (15) 226-231.
- Matos, G. and Zúñiga, D. 2002. Comportamiento de Cepas Nativas de Rizobios Aisladas de la Costa del Perú en Dos Cultivares de Pallar (*Phaseolus lunatus* l). *Ecol Apl*, 1(1), 19-24. doi:10.21704/rea.v1i1-2.225
- Matos, G.; Ormeño, E.; Zúñiga, D. 1998. Diversidad de los Rhizobios que nodulan el cultivo del pallar (*Phaseolus lunatus* L.) en la costa central del Perú. *Ecología* 1(1): 42-46.
- Mora F. 1995. Selección de cepas nativas de *Rhizobium leguminosarum* bv *phaseoli* Eficientes en fijación biológica de nitrógeno en suelos de Costa Rica. *Agronomía Mesoamericana* 6:68-74. En: [http://www.mag.go.cr/rev\\_meso/v06n01\\_068.pdf](http://www.mag.go.cr/rev_meso/v06n01_068.pdf).
- Mourad, K.; Fadhila, K.; Chahinez, M.; Meriem, R.; Philippe, D. L. and Abdelkader, B. 2009. Antimicrobial activities of *Rhizobium* sp. strains against *Pseudomonas savastanoi*, the agent responsible for the olive knot disease in Algeria. *Grasas y aceites*, 60(2), 139-146. doi: 10.3989/gya.074808.
- Murgueitio, E.; Uribe, F.; Molina, C.; Molina, E.; Galindo, W.; Chará, J. and Solarte, L. 2016.



- Establecimiento y manejo de sistemas silvopastoriles intensivos con Leucaena*. Editorial CIPAV, Cali, Colombia. 220p
- Pedraza, R. O.; Roncedo, C. S.; De Bellone, S. C.; Bellone, C. H. and Pérez, H. E. 2001. Diferenciación de rizobios nativos que nodulan cuatro leguminosas forrajeras en Tucumán, Argentina. *Ciencia del suelo*, 19(1) 79-81. En: [https://www.suelos.org.ar/publicaciones/vol\\_19n1/19\\_1\\_pedraza\\_79\\_81.pdf](https://www.suelos.org.ar/publicaciones/vol_19n1/19_1_pedraza_79_81.pdf)
- Portilla, D., Barragan, W., Carvajal, C., Cajas, Y., and Rivero, S. (2015). Establecimiento de sistemas silvopastoriles para la región Caribe. doi:10.21930/978-958-740-196-7
- Puertas, A.; De la Noval, B.; Martínez, B.; Miranda, I.; Fernández, F., & Hidalgo, L. (2006). Interacción de *Pochonia chlamydosporia* var. *catenulata* con *Rhizobium* sp., *Trichoderma harzianum* y *Glomus clarum* en el control de *Meloidogyne incognita*. *Rev Protección Veg*, 21(2): 80-89. En: [https://www.researchgate.net/profile/Fernandez\\_Felix/publication/258406177\\_INTERACCION\\_DE\\_Pochonia\\_chlamydosporia\\_var\\_catenulata\\_CON\\_Rhizobium\\_sp\\_Trichoderma\\_harzianum\\_y\\_Glomus\\_clarum\\_EN\\_EL\\_CONTROL\\_DE\\_Meloidogyne\\_incognita/data/0deec52825a9a6a134000000/ana-puertas-felix-fernandez.pdf](https://www.researchgate.net/profile/Fernandez_Felix/publication/258406177_INTERACCION_DE_Pochonia_chlamydosporia_var_catenulata_CON_Rhizobium_sp_Trichoderma_harzianum_y_Glomus_clarum_EN_EL_CONTROL_DE_Meloidogyne_incognita/data/0deec52825a9a6a134000000/ana-puertas-felix-fernandez.pdf).
- Rey, A. M.; Chamorro, D. R., & Ramírez, M. (2005). Efecto de la doble inoculación de rizobios y micorrizas sobre la producción y calidad del forraje de *Leucaena leucocephala*. *Ciencia y Tecnología Agropecuaria*, 6(2), 52-59. En: [https://doi.org/10.21930/rcta.vol6\\_num2\\_art:49](https://doi.org/10.21930/rcta.vol6_num2_art:49).
- Reyes, I.; Alvarez, L.; El-Ayoubi, H., and Valery A. 2008. Selección y evaluación de rizobacterias promotoras del crecimiento en pimentón y maíz. *Bioagro*, 20(1), 37-48. En: [http://www.ucla.edu.ve/bioagro/Rev20\(1\)/5.%20Selecci%C3%B3n%20y%20evaluaci%C3%B3n%20de%20rizobacterias.pdf](http://www.ucla.edu.ve/bioagro/Rev20(1)/5.%20Selecci%C3%B3n%20y%20evaluaci%C3%B3n%20de%20rizobacterias.pdf).
- Rincón, J.; Clavero, T.; Razz, R.; Pietrosevoli, S.; Castro, F. M., & Noguera, N. (2000). Efecto de la inoculación con cepas nativas e introducidas de *Rhizobium* sobre la fijación de nitrógeno en leucaena (*Leucaena leucocephala* (Lam) de Wit). *Revista de la Facultad de Agronomía*, 17:342-357. En: [http://revfacagronluz.org.ve/PDF/julio\\_agosto2000/ra4003.pdf](http://revfacagronluz.org.ve/PDF/julio_agosto2000/ra4003.pdf).
- Rosales, R., y Pinzón, S. 2005. Limitaciones físicas y químicas de la digestibilidad de pastos tropicales y estrategias para aumentarla. *Ciencia Y Tecnología Agropecuaria*, 6(1), 69-82. [https://doi.org/10.21930/rcta.vol6\\_num1\\_art:39](https://doi.org/10.21930/rcta.vol6_num1_art:39)
- Santillana, N., Arellano, C., & Zúñiga, D. (2005). Capacidad del *Rhizobium* de promover el crecimiento en plantas de tomate (*Lycopersicon esculentum* miller). *Ecología Aplicada*, 4(1-2), 47-51. En: [http://www.scielo.org.pe/scielo.php?script=sci\\_arttext&pid=S1726-22162005000100007&lng=es&tlng=en](http://www.scielo.org.pe/scielo.php?script=sci_arttext&pid=S1726-22162005000100007&lng=es&tlng=en).
- Stacey, G. (2007). The *Rhizobium*-Legume Nitrogen-Fixing Symbiosis. *Biology of the Nitrogen Cycle*, 147-163. doi:10.1016/b978-044452857-5.50011-4