








# Biometry and pre-germinative treatments of seeds from an Amazon endemic species

## Biometría y tratamientos pregerminativos de semillas de una especie endémica amazónica

Leomara Pessoa Brito<sup>1,2</sup>, José Dantas Araújo Lacerda <sup>1,3</sup>, Cintia Araújo Soares <sup>1,4</sup>, Franklin Luís Carlos Monteiro Júnior <sup>1,5</sup>, Magno Chagas Souza <sup>1,6</sup>, Áurea Izabel Aguiar Fonseca e Souza <sup>1,7</sup>, Clenes Cunha Lima <sup>1,8</sup>, Marcos Rodrigues <sup>1,9</sup>.

<sup>1</sup>Universidade Federal Rural da Amazônia (UFRA). Belém, Pará, Brazil. <sup>2</sup>✉ leomarapessoa@gmail.com, <sup>3</sup>✉ dantaslacerda@gmail.com, <sup>4</sup>✉ cintia.as98@hotmail.com, <sup>5</sup>✉ jrmonteiron@gmail.com, <sup>6</sup>✉ chagasmagno207@gmail.com, <sup>7</sup>✉ aurea.aguiar@yahoo.com.br, <sup>8</sup>✉ clelimaflor@yahoo.com.br, <sup>9</sup>✉ marcos.rodrigues.adm@gmail.com



<https://doi.org/10.15446/acag.v71n1.99249>

2022 | 71-1 p 81-87 | ISSN 0120-2812 | e-ISSN 2323-0118 | Rec.: 2021-10-28 Aprob.: 2022-03-29

### Abstract

This study aimed to verify the impact of different methods of overcoming dormancy in the germination of *Ipomoea cavalcantei* seeds, in addition to surveying the biometric data of its seeds and fruits. Ripe fruits were randomly collected from the species' habitat, which is a unique ecosystem characterized by small vegetation and iron outcrops. For the biometric analyses, the weight, moisture content, length, width, and thickness of 100 fruits and 100 seeds were determined. To analyse the efficiency of overcoming seed dormancy, six different treatments were tested, including mechanical, physical, and chemical methods, and the resultant germinability, average germination time, and germination speed index were evaluated. Further, in order to estimate the imbibition curve, two treatments were selected to measure the water absorption rate of the seeds until the root emission of at least 50 % of the seeds. The results showed that the *I. cavalcantei* fruits and seeds biometrically vary in length, width, and thickness, which makes it difficult to obtain standard *in situ* samples. Moreover, mechanical scarification methods were the most efficient treatments to increase the efficiency of obtaining seedlings of this species. This study can contribute to *ex situ* conservation strategies for this endemic species, which is threatened by increasing mining activities.

**Keywords:** conservation unit, dormancy, *Ipomoea cavalcantei*, mining, scarification.

### Resumen

El objetivo de este trabajo fue verificar el impacto de diferentes métodos de superación de la latencia en la germinación de semillas de *Ipomoea cavalcantei*, además de determinar los datos biométricos de sus semillas y frutos. Las frutas maduras se recolectaron al azar en el hábitat de la especie, un ecosistema único caracterizado por vegetación baja y afloramientos de hierro. Para los análisis biométricos se determinaron el peso, la humedad, el largo, el ancho y el grosor de 100 frutos y 100 semillas. Para analizar la eficiencia de la superación de la latencia de las semillas, se probaron seis tratamientos diferentes, incluyendo métodos mecánicos, físicos y químicos, y se evaluaron la germinación, el tiempo medio de germinación y el índice de velocidad de germinación. Posteriormente, para estimar la curva de imbibición, se seleccionaron dos tratamientos para medir la tasa de absorción de agua de las semillas hasta la emisión radicular de al menos el 50 % de las semillas. Los resultados demostraron que los frutos y semillas de *I. cavalcantei* varían biométricamente en longitud, ancho y grosor, lo que dificulta la obtención de muestras estándar *in situ*. Además, los métodos de escarificación mecánica fueron los tratamientos más eficientes para aumentar la eficiencia en la obtención de plántulas de esta especie. Este estudio puede contribuir a generar estrategias de conservación *ex situ* de esta especie endémica, que se ve amenazada por el aumento de las actividades mineras.

**Palabras clave:** unidad de conservación, escarificación, *Ipomoea cavalcantei*, latencia, minería.

## Introduction

The Carajás National Forest is a mountainous complex located in the State of Pará, Brazil, in the southeastern plain of the Amazon (Zanetti *et al.*, 2020; Silveira *et al.*, 2016; Babiychuk *et al.*, 2017). There, a unique ecosystem known as Canga is characterized by rugged relief, the presence of plateaus of ferruginous rocks, and abundant mineral resources (Viana *et al.*, 2016; Devecchi *et al.*, 2020). The Canga has significant economic relevance because of its mining potential and peculiar ecological environment, which includes endemic species threatened by extinction (Schaefer *et al.*, 2015; Viana *et al.*, 2016).

Various species of the *Ipomoea* genus in the Canga habitat have already been recorded (Viana *et al.*, 2016; Mota *et al.*, 2018). Among the endemic plants in this area, *Ipomoea cavalcantei*, popularly known as the Carajás flower, is noteworthy (Zappi, 2017). This species is a liana belonging to the Convolvulaceae, which has approximately 1900 species divided in 59 genera that are geographically distributed in all tropical regions (Simões *et al.*, 2017). Several species of Convolvulaceae in tropical regions are of ornamental, medical, and nutritional importance (Nkumah *et al.*, 2015), while others are toxic or invasive plants (Bezerra *et al.*, 2022).

Currently, the natural populations of the Carajás flower are threatened because their habitats are often place of mining activities (Viana *et al.*, 2016). Statistical analyses have already shown the impact of mining on the habitat of *I. cavalcantei*, considering a 50 % loss of this territory in the last three decades (Rodrigues *et al.*, 2020). This substantial decline not only impacts the reduction of the species' spatial distribution, which is already restricted, but also leads to genetic variability losses, as the entire population is suppressed by economic activities (Martinelli & Moraes, 2013; Simão-Bianchini *et al.*, 2016). Some studies have already evaluated the natural history of the species and its relationship with other *Ipomoea* species that occur in the area (Babiychuk *et al.*, 2017). However, given the great risk of extinction and the absence of a scientific history of the reproduction of the species under *ex situ* conditions, it is necessary to develop long-term conservation strategies for *I. cavalcantei*, as *in situ* conservation alone may be insufficient (Joppa *et al.*, 2013).

Researches that contribute to the consolidation of knowledge regarding fruits and seeds are necessary to provide important information for *ex situ* reproduction strategies for certain species, especially, endangered endemic species (Miller *et al.*, 2017; Zanetti *et al.*, 2020). Biometric studies indicate the genetic variability within natural populations and the relationship between this variability and abiotic factors, which are useful for the conservation and exploitation of plant resources (Gonçalves *et al.*, 2013). Determining the biometric characteristics of seeds

can improve the management of protected areas or their sustainable use, as they provide information for future studies regarding characteristics of the species and their proper identification (Souza *et al.*, 2019).

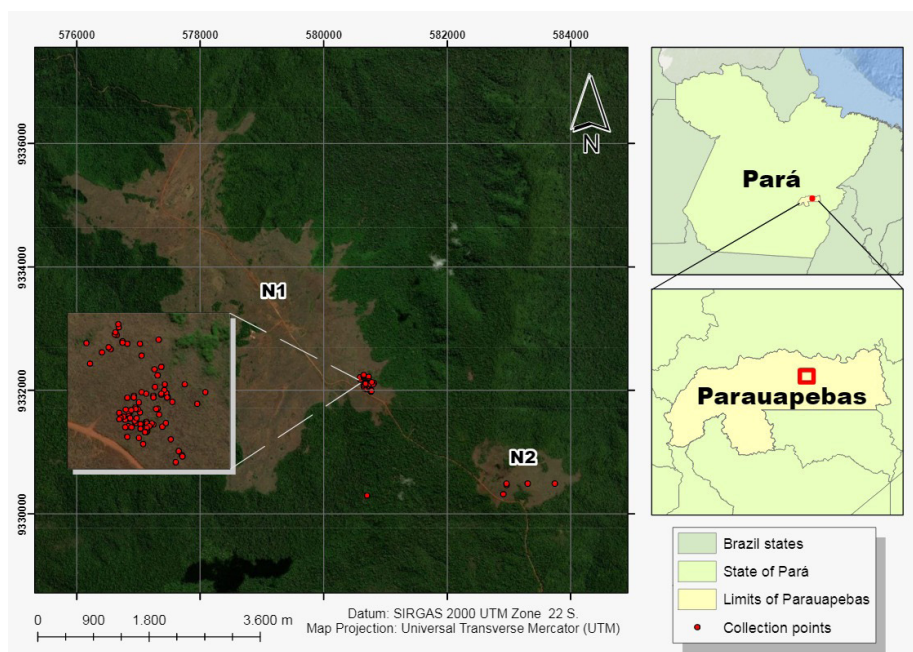
The Carajás flower is located in an environment with specific climatic characteristics, and the physiological quality of the seeds and their germination characteristics are essential information for conservation programs and germplasm banks, thus, new information regarding the species is essential for establishing protocols and routines (Clemente *et al.*, 2017). Therefore, the aim of this study was to verify the impact of different methods of overcoming dormancy on the germination of *I. cavalcantei* seeds, and to survey the biometric data of its seeds and fruits. It is expected that the results will contribute to *ex situ I. cavalcantei* conservation strategies.

## Material and methods

**Fruit and seed sample.** The fruits were collected from populations of *I. cavalcantei* in the Carajás National Forest (FLONACA), Southeast Pará State (58°06'73.0" S and 93°32'07.1" W). The fruit collection took place at random in June 2019, covering the areas N1 and N2 in the Canga habitat (Figure 1). This collection was authorized by the *Instituto Chico Mendes de Conservação da Biodiversidade* (SISBIO 67760-1). According to the Köopen Climate Classification, the climate in this region is "AWi" type (Hartwig, 2016), indicating a tropical rainy climate with winter drought, in which the annual rainfall varies between 2000 mm and 2400 mm, and the monthly average temperature is greater than 18 °C. During the fruit processing, heavily damaged seeds (predated by insects or poorly developed) were removed. Before analysis, the seeds were disinfected with fungicide Captan® 5 % for five minutes.

**Fruit and seed biometrics and moisture degree.** The biometric characterization was performed after processing the fruits and seeds, with a sampling of 100 fruits and 100 seeds. The variables measured were: i) length, width, and thickness (mm), measured using a digital caliper with a degree of accuracy of ± 0.01 mm; and ii) weight (g), measured using a digital analytical balance with a precision of 0.001 g. With the obtained data, it was possible to estimate the minimum, maximum, average, standard deviation, and coefficient of variation (CV) of the samples. The moisture content was determined according to the methodology described by Brasil (2009), using three samples of 10 seeds that were weighed and dried. The results obtained were expressed as percentages.

**Germination tests.** The six pre-germination treatments included mechanical, physical, and chemical methods, as summarized in Table 1. After the pre-germinative treatments, the seeds were placed in petri dishes on two sheets of paper towels (Germitest®) moistened with



**Figure 1.** Areas of fruit and seed collection at National Forest of Carajás, N1 and N2 sites.

distilled water, at a proportion of 2.5 times the weight of the dry paper (Brasil, 2009). The treatments were placed in a biochemical oxygen demand chamber, regulated at a constant temperature of 25° C and a photoperiod of 12/12 h (light/dark). All treatments were designed in completely randomized blocks and replicated five times with 20 seeds each, totalizing 100 seeds per treatment.

Assessments were performed daily until day 18. The results were expressed as the total germination percentage (G %) on day 10, the germination speed index (GSI), and the average germination time (AGT). Seeds that emitted radicles equal to or greater than 2 mm were considered germinated (Brasil, 2009). The GSI was calculated as the sum of the number of seeds germinated each day, divided by the number of days elapsed between sowing and germination (Maguire, 1962), and the AGT was expressed in days, obtained from the daily counts of the germinated seeds immediately after sowing until the moment of analysis (Labouriau, 1983).

**Water absorption.** To conduct the water absorption test for the seeds, the following treatments were performed using five replicates of 10 seeds for each treatment: i) control (E1), wherein no methods were applied to the seeds; and ii) mechanical treatment with sandpaper scarification (E2). The seeds were previously treated with a proportion of 5 % fungicide Captan® in a beaker containing 500 mL of water, and then weighed. After treatment, they were kept under the same conditions as those used for the germination test. During the analysis period, the seeds were removed from the dishes and superficially dried using a paper towel. The seeds were weighed every two hours during the first 24 h, after which

measurements were conducted every 12 h until there was root emission in at least 50 % of the seeds (on day 9).

**Statistical analysis.** The resultant percentage values were transformed using the square root arcsine of the germination percentage to normalize the data before applying the statistical tests. The data was evaluated through an analysis of variance, which was used to test significant sources of variation, and later the least significance difference test was applied to compare means. The probability level used for statistical significance was 5 %. Statistical and graphical analyses were performed using a R-3.5.1 software.

## Results and discussion

**Seed and fruit biometric data.** For the *I. cavalcantei* seeds, the moisture content was 13.03 % immediately after field collection and manual processing, and the weight of the 100 seeds was 2.80 g. For the seeds, the CV results were 10.76 %, 10.95 %, and 24.09 % for the length, width, and thickness, respectively. The general descriptive statistics for the fruit and seed variables are listed in Table 2.

This species has no *ex situ* replication, and it is only possible to collect biological material in its natural habitat (*in situ*), where fruits and seeds are subject to many factors (biological, climatic, environmental), which are sources for the variation of biometric data. So, the variation in the seed length, width, and thickness was similar to that observed for fruit. However, the CV of the fruits weight showed greater variability (CV of 111.76 %). Biometric data

**Table 1.** Pre-germination treatments of *Ipomoea cavalcantei* seeds

Treatment	Method
T1	Control (no treatments)
T2	Mechanical scarification with sandpaper
T3	Mechanical scarification with sandpaper and immersion in water at 25° C for 12 h
T4	Mechanical scarification with sandpaper and water bath at a temperature of 60 °C for 5 min
T5	Immersion in sulfuric acid (H <sub>2</sub> SO <sub>4</sub> ) for 1 min
T6	Immersion in water at temperature of 60 °C for 60 min

**Table 2.** Descriptive statistics for the biometric parameters of *Ipomoea cavalcantei* fruits and seeds

Parameter	Minimum	Maximum	Mean	Standard Deviation	CV (%)*
<b>Fruits</b>					
Length (mm)	1.43	17.10	11.63	1.61	13.84
Width (mm)	1.09	9.76	7.07	1.50	21.21
Thickness (mm)	2.65	10.36	6.70	1.57	23.43
Fruit weight (g)	0.02	0.92	0.17	0.19	111.76
<b>Seeds</b>					
Length (mm)	4.46	8.11	6.50	0.70	10.76
Width (mm)	2.25	5.53	3.65	0.40	10.95
Thickness (mm)	0.14	3.81	2.49	0.60	24.09

\*CV = coefficient of variation.

is important to identify genetic variability within populations of the same species, and can provide relevant data to distinguish species of the same genus (Gusmao *et al.*, 2006), as well as to obtain information on the differentiation of species of the same genus that grow in the same environment (Santos *et al.*, 2019) width, thickness, mass of fruit and seeds were measured. Seeds underwent the following pre-germination treatments: seeds without any treatment (control). The differences in the biometric results of fruits and seeds obtained in this study may be associated with genetic and environmental factors, which influence the period between flowering and fruit ripening (Souza *et al.*, 2016).

In a study on the typical arboreal species of the Cerrado *Magonia pubescens*, Macedo *et al.* (2009) observed that the biometric variations of fruits and seeds may be influenced by environmental factors during flowering and plant growth, which may indicate high variability of population genetics. Considering the existence of more individuals of the *Ipomoea* genus in the Canga-like habitat (Simão-Bianchini *et*

*al.*, 2016), the biometric data will contribute to the identification and comparison of different species, and will provide a basis for comparing *in situ* and *ex situ* characteristics.

**Germination data.** In this study, pre-germination treatments on seeds of *I. cavalcantei* were performed to identify the best method to overcome seed dormancy (Figure 2). Treatments T3 and T6 started to germinate on the first day, and the maximum rate of increase in germination occurred between days three and four.

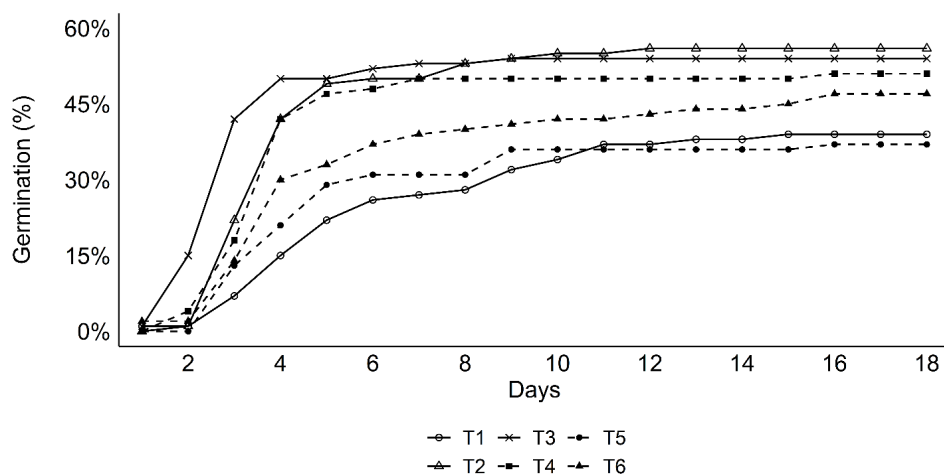
Some species of the genus *Ipomoea* may have dormancy because of the impermeability of the tegument to water (Azania *et al.*, 2009). Therefore, the efficiency of the treatments in this study is related to exposing the seed tegument to friction with sandpaper, which helped the seed absorb water. This absorption of water contributes to tissue hydration and increases respiration and metabolic activities, which results in higher demands for energy and nutrients, consequently stimulating seed germination (Carvalho & Nakagawa, 2000; Wagner & Oplinger, 2017).

Santos and Salomão (2019) verified the efficiency of the scarification method to overcome dormancy in *Ipomoea cynanchifolia* seeds, which resulted in increased germination rates. Azania *et al.* (2003) achieved better results using a mechanical scarification method, with an increase in the percentage of germination for *I. grandifolia*, *I. hederifolia*, *I. quamoclit*, *I. nil*, *Merremia cissoides*, and *M. aegyptia*. Pazuch *et al.* (2015) also found that mechanical scarification favored better germination rates for *I. grandifolia*, *I. purpurea*, and *I. indivisa* seeds.

Treatments T1 and T6 had the longest average time to germinate. Specifically, the T6 treatment exhibited an intermediate percentage of dormancy in the *I. cavalcantei* seeds. The results of Pazuch *et al.* (2015) demonstrated that treatment with hot water did not satisfactorily influence the germination process of the *I. purpurea* seeds. Our data showed that scarification is the recommended pre-germinative treatment method for *I. cavalcantei*, as compared with other treatments (Table 3).

Treatment T1 presented the lowest GSI in relation to the other treatments and, consequently, had a longer AGT. The means of the GSI values obtained in treatments T1, T5, and T6 did not show a significant difference, with a smaller number of seeds germinated daily. Mechanical and chemical scarification and immersion in hot water generate small openings in the tegument, thereby increasing permeability and allowing imbibition (Maldonado-Arciniegas *et al.*, 2018).

Regarding treatment T5, we did not observe large increases in germination after nine days. In addition, the low germination percentages acquired with chemical scarification may be caused by the



**Figure 2.** Germination percentage of *I. cavalcantei* submitted to different treatments to overcome dormancy.

T1: Control (no treatments); T2: Mechanical scarification with sandpaper; T3: Mechanical scarification with sandpaper and immersion in water at 25° C for 12 min.; T4: Mechanical scarification with sandpaper and water bath at a temperature of 60 °C for 5 min; T5: Immersion in sulfuric acid (H<sub>2</sub>SO<sub>4</sub>) for 1 min; T6: Immersion in water at temperature of 60 °C for 60 min.

**Table 3.** Average results of germination percentage at 10 days (G%), average germination time (AGT), and germination speed index (GSI) of *Ipomoea cavalcantei*

Treatment	G %	AGT (days)	GSI
T1	34.0 % b	6.34 a	1.68 c
T2	55.0 % a	4.1 bc	2.95 ab
T3	55.9 % a	3.98 cd	3.92 a
T4	50.0 % ab	3.10 d	2.84 b
T5	36.3 % b	5.02 bc	1.78 c
T6	42.0 % ab	5.49 ab	2.44 bc

T1: Control (no treatments); T2: Mechanical scarification with sandpaper; T3: Mechanical scarification with sandpaper and immersion in water at 25° C for 12 min.; T4: Mechanical scarification with sandpaper and water bath at a temperature of 60 °C for 5 min; T5: Immersion in sulfuric acid (H<sub>2</sub>SO<sub>4</sub>) for 1 min; T6: Immersion in water at temperature of 60 °C for 60 min.

The same letters in the same column indicate no statistical difference between treatments. Least significance difference (LSD) test of means ( $p < 0.05$ ).

exposure time to sulfuric acid that was not sufficient to break the tegument, delaying water absorption, and consequently the protrusion of the radicle. Similar results were obtained by Pazuch *et al.* (2015), who verified that the immersion of seeds in sulfuric acid was not efficient in increasing the germination percentage of *I. grandifolia* seeds. Conversely, the results obtained by Azania *et al.* (2003) showed that the exposure of *Ipomoea* seeds to sulfuric acid increased the germination percentage.

We found that T4 had a shorter AGT (3.10 days) and did not differ statistically from T3 (3.98 days). Treatments T2, T3, and T4 showed higher GSI values, exhibiting greater potential for daily seed germination. Similar results were obtained by Santos and Salomão (2019), who performed scarification

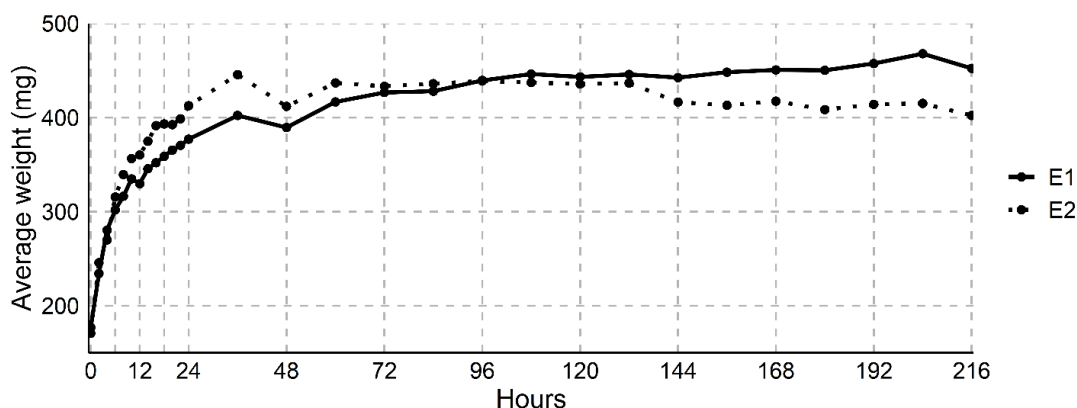
with sandpaper, and obtained higher germination percentages for the seeds of *I. cynanchifolia*.

It is recommended to apply mainly treatments T2, T3, and T4 to overcome *I. cavalcantei* seeds dormancy, in order to disrupt the tegument without damaging the seeds. These treatments are recommended to accelerate the germination process, which may contribute to the efficiency in *ex situ* reproduction strategies.

The results of seed dormancy can also be correlated with the characteristics of the Canga environment. Immediately after the fructification period, the habitat experiences a large period of drought, and the species with deciduous characteristics only produce new branches and leaves after the return of the rainy period. In this context, physical scarification methods contribute to the efficiency and uniformity of the *ex situ* germination of the species, as in their habitat, the seeds can become vulnerable to attacks from predators and to the temporal limitation of fructification.

**Imbibition curve.** The imbibition process of the *I. cavalcantei* seeds resulted in a three-phase imbibition pattern (Figure 3). In the first phase (phase I), E1 and E2 showed increasing average mass values as a result of high water absorbency. The seeds scarified with sandpaper had an average initial weight of 200 mg and an average final weight of 452 mg, which is 12.4 % higher than that of the E1 treatment. The increase in water absorption in the treatment with scarification was higher in phase I, and it stabilized in both treatments after 72 hours. Imbibition results reinforce the idea that scarification is more interesting to increase the efficiency of germination.

During the interval between 48 and 72 h of imbibition, there was a reduced mass gain, which



**Figure 3.** *Ipomoea cavalcantei* seed imbibition curve, expressing the average seed weight (mg) as a function of time (h). E1: No methods were applied to the seeds; E2: mechanical treatment with sandpaper scarification.

can be described as a stationary stage (phase II) or physiological rest (Soares *et al.*, 2019). After 82 h, phase III began, which is characterized by seeds with an average low weight gain. In contrast, in the scarified seeds, there was a reduction in the average weight after 127 h. Thus, phase III begins with protrusion of the radicle, which occurs only in living and non-dormant seeds.

## Conclusions

The fruits and seeds of *I. cavalcantei* presented biometric variations in length, width, and thickness. The seeds of *I. cavalcantei* did not show higher resistance to water penetration in different treatments. However, scarification methods with sandpaper are recommended to increase the uniformity of time and germination percentages, thereby increasing the efficiency of obtaining seedlings of this species. Such information can be used for developing *ex situ* conservation strategies for species potentially threatened by advances in mining activities.

## References

- Azania, A. A. P. M., Azania, C. A. M., Pavani, M. C. M. D. and Cunha, M. C. S. (2003). Métodos de superação de dormência em sementes de *Ipomoea* e *Merremia*. *Planta Daninha*, 21(2), 203-209. <https://doi.org/10.1590/s0100-83582003000200005>
- Azania, C. A. M., Marques, R. P., Azania, A. A. P. M. and Rolim, J. C. (2009). Overcoming dormancy of *Ipomoea quamoclit* and *I. hederifolia* seeds. *Planta Daninha*, 27(1), 23-27. <https://doi.org/10.1590/S0100-83582009000100004>
- Babiychuk, E., Kushnir, S., Vasconcelos, S., Dias, M. C., Carvalho-Filho, N., Nunes, G. L., dos Santos, J. F., Tyski, L., da Silva, D. F., Castilho, A., Fonseca, V. L. I. and Oliveira, G. (2017). Natural history of the narrow endemics *Ipomoea cavalcantei* and *I. mabaensis* from Amazon Canga savannahs. *Scientific Reports*, 7(1), 1-15. <https://doi.org/10.1038/s41598-017-07398-z>
- Bezerra, J. J. L., Oliveira Neta, M. D. F. de and Araújo, J. M. M. de. (2022). Fitoquímica e intoxicações em ruminantes por *Ipomoea asarifolia* (Desr.) Roem. & Schult. (Convolvulaceae): Uma revisão. *Scientific Electronic Archives*, 15(3), 84-92. <https://doi.org/10.36560/15320221517>
- BRASIL. Ministério da Agricultura, Pecuária e Abastecimento. (2009). *Regras para Análise de Sementes*. Ministério da Agricultura, Pecuária e Abastecimento. Secretaria de Defesa Agropecuária, Mapa/ACS. [https://www.gov.br/agricultura/pt-br/assuntos/insumos-agropecuarios/arquivos-publicacoes-insumos/2946\\_regras\\_analise\\_sementes.pdf](https://www.gov.br/agricultura/pt-br/assuntos/insumos-agropecuarios/arquivos-publicacoes-insumos/2946_regras_analise_sementes.pdf)
- Carvalho, N. M. and Nakagawa, J. (2000). *Sementes: - Ciência, Tecnologia e Produção 5ª Edição*. Funep.
- Clemente, A. S., Müller, J. V., Almeida, E., Costa, C. A., Dias, S. L., Brehm, J. M., Rebelo, R. and Martins-Loução, M. A. (2017). What can routine germination tests in seed banks tell us about the germination ecology of endemic and protected species? *Botany*, 95(7), 673-684. <https://doi.org/10.1139/cjb-2017-0003>.
- Devecchi, M. F., Lovo, J., Moro, M. F., Andrino, C. O., Barbosa-Silva, R. G., Viana, P. L., Giulietti, A. M., Antar, G., Watanabe, M. T. C. and Zappi, D. C. (2020). Beyond forests in the Amazon: biogeography and floristic relationships of the Amazonian savannas. *Botanical Journal of the Linnean Society*, 193(4), 478-503. <https://doi.org/10.1093/botlinnean/boaa025>
- Gonçalves, L. G. V., Andrade, F. R., Junior, B. H. M., Schossler, T. R., Lenza, E. and Marimon, B. S. (2013). Biometria de frutos e sementes de mangaba (*Hancornia speciosa* Gomes) em vegetação natural na região leste de Mato Grosso, Brasil. *Revista de Ciências Agrárias*, 36(1), 31-40. <https://doi.org/10.19084/rca.16280>.
- Gusmão, E., Vieira, F. de A. and Fonseca Junior, E. M. da. (2006). Fruits and endocarps biometry of murici (*Byrsonima verbascifolia* Rich. ex A. Juss). *Cerne*, 12(1), 84-91. [https://www.researchgate.net/publication/26468442\\_FRUITS\\_AND\\_ENDOCARPS\\_BIOMETRY\\_OF\\_MURICI\\_Byrsonima\\_verbascifolia\\_Rich\\_ex\\_A\\_Juss](https://www.researchgate.net/publication/26468442_FRUITS_AND_ENDOCARPS_BIOMETRY_OF_MURICI_Byrsonima_verbascifolia_Rich_ex_A_Juss).
- Hartwig, M. E. (2016). Detection of mine slope motions in Brazil as revealed by satellite radar interferograms. *Bulletin of Engineering Geology and the Environment*, 75(2), 605-621. <https://doi.org/10.1007/s10064-015-0832-8>.
- Joppa, L. N., Visconti, P., Jenkins, C. N. and Pimm, S. L. (2013). Achieving the Convention on Biological Diversity's Goals for Plant Conservation. *Science*, 341(6150), 1100-1103. <https://doi.org/10.1126/science.1241706>

- Labouriau, L. G. (1983). *A germinação das sementes*. Secretaria- Geral da Organização dos Estados Americanos, Programa Regional de Desenvolvimento Científico e Tecnológico..
- Macedo, M. C. D. E., Scalon, S. de P. Q., Sari, A. P., Filho, H. S., Rosa, Y. B. C. J. and Robaina, A. D. (2009). Biometry of fruit and seeds and germination of *Magonia pubescens* ST.Hil (SAPINDACEAE). *Revista Brasileira de Sementes*, 31(2), 202-211. <https://doi.org/https://doi.org/10.1590/S0101-31222009000200024>
- Maguire, J. D. (1962). Speed of germination—aid in selection and evaluation for seedling emergence and vigor. *Crop Science*, 2(2), 176-177. <https://doi.org/https://doi.org/10.2135/cropsci1962.0011183X000200020033x>
- Maldonado-Arciniegas, F., Rúaless, C., Caviedes, M., Ramírez, D. X. and León-Reyes, A. (2018). An evaluation of physical and mechanical scarification methods on seed germination of *Vachellia macracantha* (Humb. & Bonpl. ex Willd.) Seigler & Ebinger. *Acta Agronómica*, 67(1), 120-125. <https://repositorio.unal.edu.co/handle/unal/68124>
- Martinelli, G. and Moraes, M. (2013). *Livro Vermelho da Flora do Brasil*. 1. ed. Centro Nacional de Conservação da Flora. <http://dspace.jbrj.gov.br/jspui/handle/doc/26>
- Miller, B. P., Sinclair, E. A., Menz, M. H. M., Elliott, C. P., Bunn, E., Commander, L. E., Dalziell, E., David, E., Davis, B., Erickson, T. E., Golos, P. J., Krauss, S. L., Lewandrowski, W., Mayence, C. E., Merino-Martín, L., Merritt, D. J., Nevill, P. G., Phillips, R. D., Ritchie, A. L., ... Stevens, J. C. (2017). A framework for the practical science necessary to restore sustainable, resilient, and biodiverse ecosystems. *Restoration Ecology*, 25(4), 605-617. <https://doi.org/https://doi.org/10.1111/rec.12475>
- Nkumah, O., Iroka, F. C. and Chukwuma, M. O. (2015). Assessing the morphological and taxonomic characteristics of some members of convolvulaceae family. *International Journal of Herbal Medicine*, 2(5), 38-42. [https://www.researchgate.net/publication/304154371\\_Assessing\\_the\\_morphological\\_and\\_taxonomic\\_characteristics\\_of\\_some\\_members\\_of\\_convolvulaceae\\_family](https://www.researchgate.net/publication/304154371_Assessing_the_morphological_and_taxonomic_characteristics_of_some_members_of_convolvulaceae_family)
- Pazuch, D., Trezzi, M. M., Diesel, F., Batistel, S. C. and Pasini, R. (2015). Superação de dormência em sementes de três espécies de *Ipomoea*. *Ciência Rural*, 45(2), 192-199. <https://doi.org/10.1590/0103-8478cr20120665>
- Rodrigues, M., Souza, Á. I. A. F., Goulart, S. L., Kohler, S. V., Paia Lima, G. C., dos Anjos, L. J. S., Lacerda, J. D. A., Souza, M. C., Soares, C. A., Borges, R. P., da Cruz, W. P. and Ebling, A. A. (2020). Geostatistical modeling and conservation implications for an endemic *Ipomoea* species in the Eastern Brazilian Amazon. *Journal for Nature Conservation*, 57, 125893. <https://doi.org/https://doi.org/10.1016/j.jnc.2020.125893>
- Santos, I. R. I. and Salomão, A. N. (2019). Germinação de sementes de *Ipomoea cynanchifolia* após armazenamento em diferentes temperaturas e escarificação. *Embrapa Recursos Genéticos e Biotecnologia*, 1 ed. <https://www.embrapa.br/busca-de-publicacoes/-/publicacao/1116845/germinacao-de-sementes-de-ipomoea-cynanchifolia-apos-armazenamento-em-diferentes-temperaturas-e-escarificacao>
- Santos, J. C. C., Silva, D. M. R., Costa, R. N., Santos, S. A., Silva, L. K. dos S. and Silva, J. V. (2019). Biometria de frutos e sementes e tratamentos pré-germinativos em sementes de *Hymenaea courbaril*. *Revista Eem Agronegócio e Meio Ambiente*, 12(3), 957-979. <https://doi.org/10.17765/2176-9168.2019v12n3p957-979>
- Schaefer, C. E. G. R., Candido, H. G., Corrêa, G. R., Pereira, A., Nunes, J. A., Souza, O. F., Marins, A., Fernandes Filho, E. and Ker, J. C. (2015). Solos desenvolvidos sobre canga ferruginosa no Brasil: uma revisão crítica e papel ecológico de termiteiros. In F. F. Carmo & L. H. Y. Kamino (Ed.), *Geossistemas Ferruginosos do Brasil: áreas prioritárias para conservação da diversidade geológica e biológica, patrimônio cultural e serviços ambientais* (1 ed, pp. 77-102). 3i Editora. [https://biomameioambiente.com.br/uploads/6/5/6/8/65687651/cap02\\_solos\\_desenvolvidos\\_sobre\\_canga\\_ferruginosa\\_aiana.pdf](https://biomameioambiente.com.br/uploads/6/5/6/8/65687651/cap02_solos_desenvolvidos_sobre_canga_ferruginosa_aiana.pdf)
- Silveira, F. A. O., Negreiros, D., Barbosa, N. P. U., Buisson, E., Carmo, F. F., Carstensen, D. W., Conceição, A. A., Cornelissen, T. G., Echternacht, L., Fernandes, G. W., Garcia, Q. S., Guerra, T. J., Jacobi, C. M., Lemos-Filho, J. P., Le Stradic, S., Morellato, L. P. C., Neves, F. S., Oliveira, R. S., Schaefer, C. E., ... Lambers, H. (2016). Ecology and evolution of plant diversity in the endangered campo rupestre: a neglected conservation priority. *Plant and Soil*, 403(1), 129-152. <https://doi.org/10.1007/s11104-015-2637-8>
- Simão-Bianchini, R., Vasconcelos, L. V. and Pastore, M. (2016). Flora of the cangas of the Serra dos Carajás, Pará, Brazil: Convolvulaceae. *Rodriguésia*, 67(5), 1301-1318. <https://doi.org/10.1590/2175-7860201667530>
- Soares, P. de S., Moraes, L. da F., Gomes, E. S. and Gomes, R. F. (2019). Curva de embebição para sementes de chicória da Amazônia (*Eryngium foetidum* IL.). *Enciclopédia Biosfera*, 16(29), 588-595. [https://doi.org/10.18677/EnciBio\\_2019A44](https://doi.org/10.18677/EnciBio_2019A44)
- Souza, A. G., Smiderle, O. J., Spinelli, V. M., Souza, R. O. and Bianchi, V. J. (2016). Correlation of biometrical characteristics of fruit and seed with twinning and vigor of *Prunus persica* rootstocks. *Journal of Seed Science*, 38(4), 322-328. <https://doi.org/10.1590/2317-1545v38n4164650>
- Souza, D. D. and Cavalcante, N. B. (2019). Biometria de frutos e sementes de *Jatropha mollissima* (Pohl) Baill. (Euphorbiaceae). *Acta Biológica Catarinense*, 6(2), 115-122. <https://core.ac.uk/download/pdf/236355288.pdf>
- Viana, P. L., Mota, N. F. O., Gil, A. S. B., Salino, A., Zappi, D. C., Harley, R. M., Ilkiu-Borges, A. L., Secco, R. S., Almeida, T. E., Watanabe, M. T. C., dos Santos, J. U. M., Trovó, M., Maurity, C. and Giulietti, A. M. (2016). Flora das cangas da Serra dos Carajás, Pará, Brasil: história, área de estudos e metodologia. *Rodriguésia*, 67(5), 1107-1124.
- Wagner, E. J. and Oplinger, R. W. (2017). Effect of overwinter hydration, seed storage time, temperature, photoperiod, water depth, and scarification on seed germination of some *Schoenoplectus*, *Polygonum*, *Eleocharis* and *Alisma* species. *Aquatic Botany*, 136, 164-174. <https://doi.org/10.1016/j.aquabot.2016.10.004>
- Zanetti, M., Dayrell, R. L. C., Wardil, M. V., Damasceno, A., Fernandes, T., Castilho, A., Santos, F. M. G. and Silveira, F. A. O. (2020). Seed functional traits provide support for ecological restoration and ex situ conservation in the threatened amazon ironstone outcrop flora. *Frontiers in Plant Science*, 11, 599496. <https://doi.org/10.3389/fpls.2020.599496>