

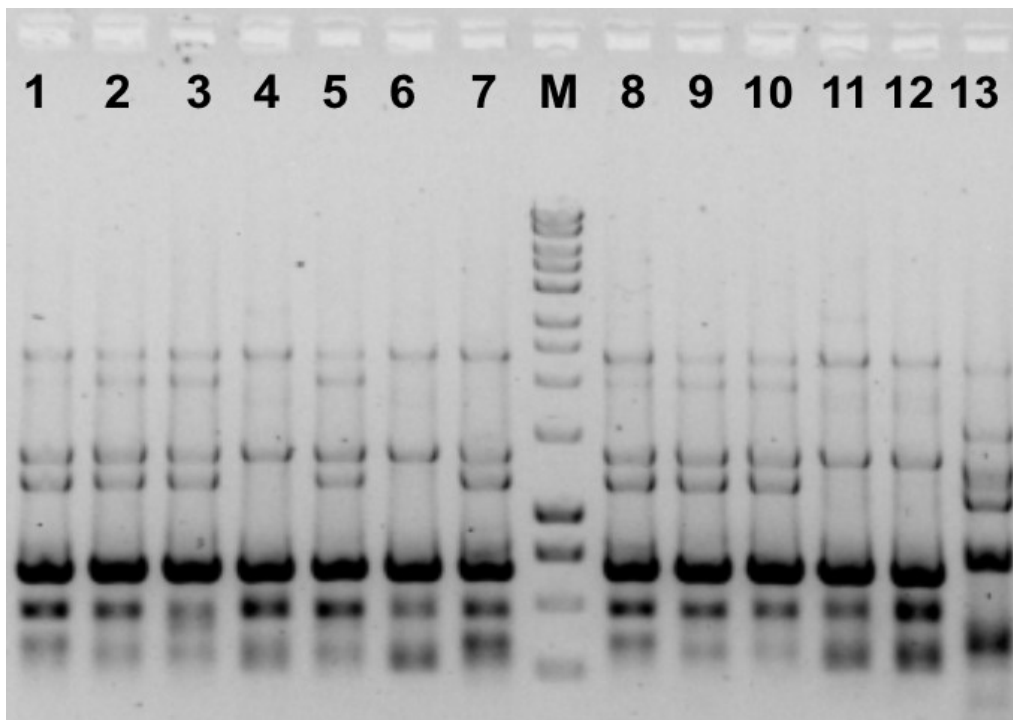
**ISSR markers as a tool to differentiate genotypes of *Cinchona* hybrids propagated in
vitro and ex vitro**

Supplementary Material

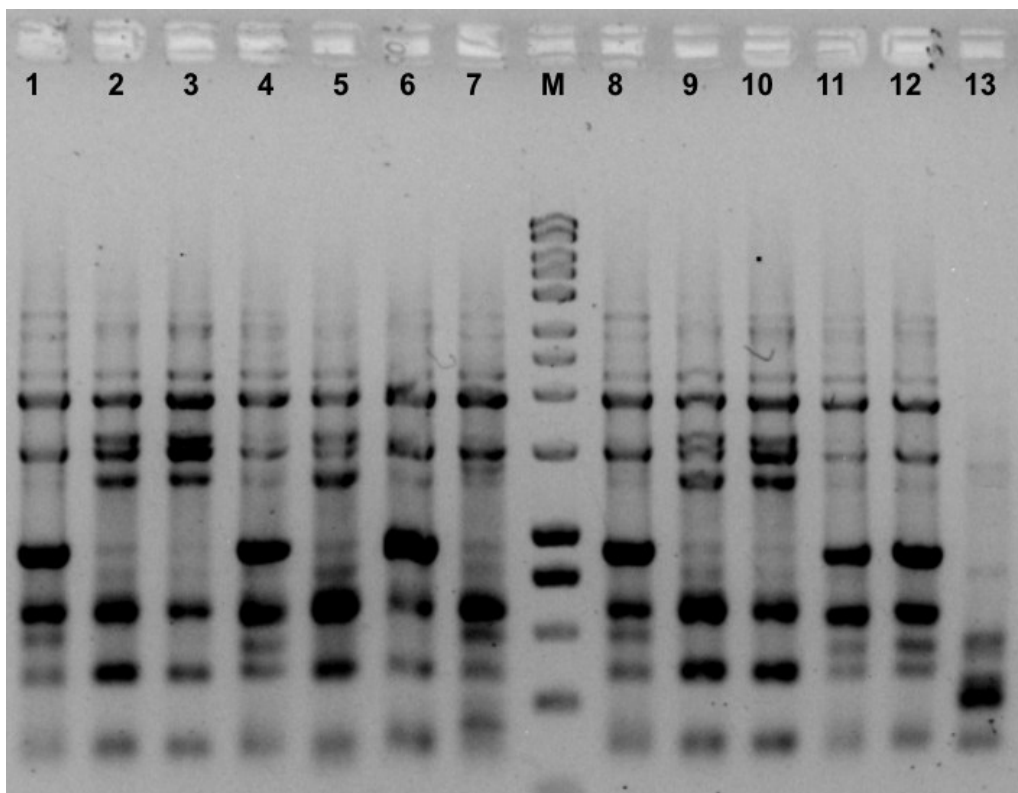


Supplementary Figure 1. Leaves from the distinct *Cinchona* genotypes. Showing the high degree of morphological similarity among genotypes, limiting phenotypic traits for identification.

A.



B.



Supplementary Figure 2. Agarose gel electrophoresis of ISSRS DNA fingerprinting **A.** (ISSR XX) **B.** (ISSR XX) amplification products from selected *Cinchona* genotypes, Lanes 1–7 correspond to *ex vitro* samples: (1) LC29, (2) LF74, (3) LF74GB, (4) LF211, (5) LF40, (6) Unknown *ex vitro* genotype, and (7) S29. Lane M contains Bioline - HyperLadder™ 500bp used as a molecular size marker. Lanes 8–13 correspond to *in vitro* samples: (8) LC29, (9) LF74, (10) LF74GB, (11) LF211, (12) LF40, and (13) *Coffea* sp. A) ISSR 3 B) ISSR