

Economic efficiency of Colombian agricultural companies: an empirical study of stochastic production frontiers

Milena Arias-Robles ^a & Silverio Alarcón ^b

^a Corporación Colombiana de Investigación Agropecuaria -AGROSAVIA, El Carmen de Bolívar, Colombia and Universidad Politécnica de Madrid, España. mearias@agrosavia.co

^b Departamento de Economía Agraria, Estadística y Gestión de Empresas, Universidad Politécnica de Madrid, España. silverio.alarcon@upm.es

Received: March 28th, 2020. Received in revised form: November 10th, 2020. Accepted: December 1st, 2020.

Abstract

By estimating a stochastic frontier production function that links labor and capital variables in 410 agricultural companies, the behavior of the agricultural productive efficiency in Colombia was evaluated, as well as its effects by geographic location and business size. Results showed that the factors that contribute most to the production function are related to the labor force, business liquidity and intangible assets, aspects that provide competitive advantages for medium and large companies; therefore, we suggest to improve the political-private strategy of business management with incentives for associativity, economic financing, access to R+D+i and transfer, directed to small agricultural companies.

Keywords: location, business size; human capital; current assets; intangible assets; *JEL*: D22, O13, Q10.

Eficiencia económica de las empresas agrarias de Colombia: un estudio empírico de las fronteras estocásticas de producción

Resumen

Mediante la estimación de una función de producción de frontera estocástica que vincula variables de trabajo y capital en 410 empresas agrarias, se evaluó el comportamiento de la eficiencia productiva agraria de Colombia, y sus afectaciones por localización geográfica y por tamaño empresarial. Se encontró que los factores que más aportan a la función de producción se relacionan con la fuerza laboral, la liquidez empresarial y el inmovilizado inmaterial, aspectos que brindan ventajas de competencia para las medianas y grandes empresas; por lo tanto, se sugiere mejorar la estrategia político-privada de gestión empresarial con incentivos para la asociatividad, el financiamiento económico, el acceso a I+D+i y la transferencia, dirigida a la pequeña empresa agraria.

Palabras clave: ubicación; tamaño empresarial; capital humano; activo corriente; inmovilizado inmaterial; *JEL*: D22, O13, Q10.

1. Introduction

Colombia, despite the economic growth of the last decades, continues with structural and business management limitations that slow down the sustainable improvement of the productive efficiency of its companies. In particular, entities such as Corpoica, currently AGROSAVIA [1], in their diagnosis of the agricultural sector, show the imbalances in productivity and technical inefficiency between economic activities and the departments of the

country, attributable to the limited use of technological packages, to insufficient investment in science, technology and innovation, among other aspects, which restrict an optimal use of productive factors.

In this direction, authors such as Quintero, Prieto, Barrios and Leviller [2] have focused their studies on knowing the individual and associative contribution of production factors that affect productive efficiency and to give recommendations for improvement in business management as a competitive strategy. Farrell [3] was a pioneer in defining productive efficiency as the

result of price efficiency and technical efficiency; furthermore, together with other authors as Debreu [4] and Koopmans [5], they indicated that this efficiency is a relative concept that starts from the comparison with other possible use alternatives of production resources (in input selection or cost reduction) that allow the maximization of the results. Besides, its valuation is given from the production ceiling or efficient frontier obtained in the selected sample.

According to Battese and Coelli [6], there are worldwide two known ways to evaluate the production function: deterministic (mathematical) and probabilistic (stochastic). The current research chooses to deepen in the study of the latter through an empirical estimation of the Cobb-Douglas type production functions and the comparison of the elasticities of the output to variations of different production factors in the sample of agricultural companies.

There is considerable variability in studies that inquire about the effects of production factors on the productive efficiency of the company, its sector, and territory from the use of the stochastic frontiers methodology. For example, Mungaray and Ramírez [7] explained the positive contribution that formal and informal human capital makes in the operations of low-value-added Mexican companies with financial, technological, and market access limitations. While Domínguez [8] and Albornoz [9], on current assets, highlighted the importance of disposing of sufficient working capital for the stability of the company in aspects such as meeting their financial obligations in the short and medium terms and having timely access to discount opportunities provided by their commercial suppliers, among others.

More recently, Jara [10] found 40% technical inefficiency in a group of companies in Latin America (which included Colombia) and that were linked to the primary activity. Further, regarding business size, large companies have better efficiency percentages on an increasing scale and with higher levels of income compared to small and medium-sized companies; therefore, this author suggests differential strategies that increase productivity and sectoral competitiveness.

Two specific studies in Colombia based on the function of production costs in cassava, cotton, and coffee farms, led to defining the maximum quantities of product that can be obtained with a given volume of inputs and whose results supported the presence of limitations in the competitiveness of the agricultural sector for the maximum number of products available [11,13].

Considering what was mentioned above, we infer that research on productive efficiency in the national agricultural sector and on the peculiarities of its production factors is limited to guide improvements in business management and sector planning, and hence, to define strategies that stimulate territorial growth. Consequently, the aim of this study was to evaluate the behavior of the productive efficiency of agricultural companies in Colombia, starting from a hypothesis to be tested: the efficiency percentages of the national agricultural sector vary depending on the geographical location and business size.

2. Methodology

Following the methodology described by Battese and Coelli [14], this research performs a stochastic evaluation of

the production function to estimate the average technical efficiency of the sample of selected companies in the Colombian agricultural sector. This allowed knowing the optimal combination of inputs for the definition of the stochastic frontier and obtaining the technical efficiency indicators that show the gap between this frontier and the production technology of the companies in the sector.

We started by understanding the efficient frontier as the maximum theoretical response that can be obtained from a mix of possible inputs in a productive unit [15]. As anticipated, this measurement allows us to temporarily compare each productive unit with the best one that has been observed in practice (frontier) within a given group of companies, economic sector, or region. However, the measurement of the efficient frontier has limitations in terms of the affectation caused by the context where it is measured, the use of the technology used, and the restrictions of the production scheme [6].

For the measurement of the production function returns, the Cobb-Douglas function was selected, which reflects the constant returns and a multiplicative relationship at the rate of the inputs and outputs that are involved. This type of function was selected, given its operational simplicity and the fact that there are no restrictions on the value and possibility of variation of the production frontier. Below, the linearized Cobb-Douglas type equation with estimates of the β parameters and the technical efficiency component is presented:

$$\ln Y_i = \beta_0 + \beta_{h0} * D_h + \sum_j \beta_j \ln x_{ji} + v_i - u_i \quad (1)$$

Where i represents the i -th producer; j is the input considered, and Y represents the production. D_h refers to the dummy variable to control location effects, the subscript h indicates the department where the company is located, and v_i groups the variables in production that are random and beyond the control of the company (e.g., adverse climatic effect such as a pluviometric regime of prolonged drought, low to complete absence from work due to sickness, among others). Further, u_i are non-negative random variables higher than zero, and unobservable associated with the technical inefficiency of production. In the original model, it is assumed that each u_i is distributed independently as an asymmetric, seminormal distribution with a mean of zero and the $\sigma^2 u$ variance. The technical efficiency will be total when $u_i = 0$, with the presence of technical inefficiency when $u_i > 0$, regardless of the value taken by v_i .

The model assumes that the variables are independently and identically distributed (i.i.d) as a Normal with zero mean and constant N variance ($0, \sigma^2 v$). An error term (ϵ_i) can also be considered from the values of v_i and u_i described above, so $\epsilon_i = v_i - u_i$

From the minimum quadratic adjustment, the stochastic frontier model of the mean production function was estimated, with the maximum-plausible estimation using the Davidon-Fletcher-Powell algorithm [16]. This allowed obtaining estimators of the λ parameters (coefficients between the standard deviations of v_i and u_i) and σ^2 (sum of the variances of those error terms). On the other hand, the γ parameter measures the production proportion of the

variance attributable to technical inefficiencies, and, therefore, it is susceptible to being corrected through improvements in the management of the production factors. The ν parameter is estimated as $\nu = \lambda^2 / (1 + \lambda^2) = \sigma^2 u / (\sigma^2 u + \sigma^2 \nu)$, so that $0 \leq \nu \leq 1$ [17].

The technical efficiency indices for each company are calculated using the equation $ET_i = \exp[-E(ui / \epsilon_i)]$, where $0 \leq ET_i \leq 1$, and $E(ui / \epsilon_i)$ is the expectation of the term ui , conditional to the ϵ_i value, whose value provides an estimator of that error term, being able to be obtained using the formula developed by Jondrow et al. [18].

It should be noted that the elasticities associated with the coefficients expressed in the natural logarithm variables show the increase in productivity output. Moreover, using a contrast test, it was possible to establish the variations in scale returns (constant, increasing, or decreasing) in all the regressions of the study that used equation 2.

$$\ln fp = \beta_0 + \beta_1 \ln \text{employees} + \beta_2 \ln \text{intangible assets} + \beta_3 \ln \text{fixed assets} + \beta_4 \ln \text{current assets} \quad (2)$$

The inefficiency term was modeled according to the department in which the company is located, while the classification by business size was made based on the number of employees that the company has. In order not to overestimate or underestimate business production, the calculation of the inventory differences of the production reported in total sales by the agricultural companies and which were reported in their business records was used.

Finally, the statistical processing of the production frontier and the stochastic (random) frontier were performed with the R software, version 3.5.2 (2018-12-20) - "Eggshell Igloo" Copyright (C) [19]), using the FRONTIER package (Tim Coelli and Arne Henningsen, 2013).

2.1 Data and variables

The stochastic frontier model was determined to assess the contribution of total factor productivity to the economic growth of a sample of 410 commercial agricultural companies in Colombia that carry out 20 economic activities according to the National Classification of Economic Activities (NACE Rev. 2) that can be seen in Table 1.

The subsectors with the highest business participation are other cattle and buffalo farming (17.32%), support activities for agriculture (17.07%), the cultivation of sugar cane, and agricultural production combined with livestock production (each with 10.49%). On the other hand, by business size, 78.53% is concentrated in medium- and large-sized companies, while the remaining 21.46% are small companies.

The analyzed information was extracted from those companies that make periodic reports of their financial balances in the Mercantile Registers of the Colombian Chambers of Commerce, and that are collected in the ORBIS Database (accessed at Universidad Complutense de Madrid, Spain [20]), excluding micro-enterprises (according to the criteria of Ministerio de Comercio, Industria y Turismo [21]), or those who had financial problems. The geographical representation of the study includes 25 departments of the country (including the special district of Bogotá) and leaving out the departments of Amazonas, Arauca, Boyacá, Guainía, Guaviare, San Andrés and Providencia, Vaupés, and Vichada. In particular, it should be noted that 50% of the agricultural companies in the study were concentrated in the department of Valle del Cauca (36.48%) and Bogotá (27.03%).

As for the temporality, it only corresponds to the year 2015 given the limitations for obtaining panel data; this is a restriction of the current study that would allow contributing to the evolutionary analysis of agricultural efficiency or technological change in the country.

Table 1. Agricultural sector companies

Type of activity	Description	Number of Companies
100	Non-perennial crops	1
111	Cultivation of cereals (except rice), legumes and oilseeds	10
112	Rice cultivation	4
113	Cultivation of vegetables, roots, and tubers	8
114	Sugar cane cultivation	43
119	Other non-perennial crops	6
122	Tropical and subtropical fruit cultivation	27
126	Oilseed cultivation	22
127	Cultivation of plants used for beverages	1
128	Cultivation of spices, aromatic, medicinal and pharmaceutical plants	3
129	Other perennial crops	27
130	Plant propagation	7
142	Farming of other cattle and buffaloes	71
146	Pig farming	10
147	Poultry farming	39
149	Other livestock farming	4
150	Agricultural production combined with livestock production	43
161	Agricultural support activities	70
162	Livestock support activities	11
163	Post-harvest preparation activities	3
Total agricultural companies		410

Source: Elaborated by the authors

Table 2.

Model variables

Variables	Description
Number of employees	Indicates the existing workforce in the company used for production.
Intangible assets	Represents the expenses incurred in research and development, industrial property, computer applications, and administrative concessions, among others.
Fixed assets	Consolidates investment in elements such as natural assets, land, buildings, technical installations, furniture, equipment, and transport elements, among others.
Current assets	Resources of the company that can be converted into liquid money in less than or equal to 12 months.
Income	Relates to the monetary amount received by the company based on sales of products or services.

Source: Elaborated by the authors

Table 3. Estimation of the production function for the agricultural sector

Variables	Coefficient	Std. Error	t value	Pr(> t)	R2
Intercept	3.59558	0.19969	18.006	< 2e-16 ***	
log No. of employees	0.76275	0.05109	14.93	< 2e-16 ***	
log intangible assets	0.09953	0.05479	1.817	0.070007	0.5021
log fixed assets	0.02106	0.01872	1.125	0.261286	
log current assets	0.08749	0.02568	3.407	0.000723 ***	

(*), (**), (***) represents a significance lower than 10%, 5%, and 1%, respectively

Source: Elaborated by the authors

The inputs or model entries correspond to the variables related to the productive factors of labor and capital (measured in thousands of dollars), whose characteristics are described in Table 2.

It should be noted that the selection of the variables described above obeys to the theoretical foundations and empirical verification of their effect on increasing profitability, innovation, and the competitiveness of companies. For example, *current assets* offer sufficient working capital for the normal development of the operational management processes of the company, and allow taking advantage of the commercial opportunities offered by its suppliers [8,9]. For its part, *intangible assets*, is a non-physical productive resource that allows obtaining improvements in production technology through new productive knowledge, including patents, trademarks, franchises, goodwill, and investment in research, development, skills and tacit knowledge of workers or the organization [22]. Meanwhile, the variable number of employees shows the human capital that the company possesses, its level of training, and the experience of the personnel available to the productive unit.

3. Results

This section includes two parts. The first part defines the production function of the Colombian agrarian sector, and the second one estimates the stochastic frontier at the general

level and by company size, together with the identification of the departments that have the most inefficient companies in the sector.

3.1 The agricultural production function for Colombia

Table 3 shows the estimation of the sectoral production function, its elasticities, and the significance of the variables with the most significant contribution to the generation of agricultural output.

The production factors used explain 50.21% of the income of the agricultural companies of the country. In particular, a significance of less than 1% was obtained for the factors number of employees and current assets, with elasticities of 0.76275 and 0.08749, respectively; therefore, we deduce that increases of 1% in the labor production factor and business liquidity generated income increases of 0.76% and 0.08%, respectively.

3.2 Stochastic frontier functions

With the variables used in the production function in the previous section, the stochastic frontier [6] was modeled in Table 4 for the national agricultural sector at a general level and by business size, in addition to its inefficiency by departmental location.

Table 4.

General stochastic frontier of the Colombian agricultural sector

Variables	Coefficient	Std. Error	Pr(> z)	Mean efficiency
Intercept	4.7908	0.2449	< 2.2e-16***	
log No. employees	0.514	0.0677	3.346e-14***	
log intangible assets	0.0983	0.0472	3.72782e-2**	
log fixed assets	0.0078	0.0190	0.6825928	0.5252
log current assets	0.117	0.0253	3.95e-6***	
Sigma Sq.	3.0618	0.9570	1.3783e-3**	
Gamma	0.7007	0.0935	6.875e-14***	

(*), (**), (***) represents a significance lower than 10%, 5%, and 1%, respectively

Source: Elaborated by the authors

Table 5.
Stochastic frontier of small businesses

Variables	Coefficient	Std. Error	Pr(> t)	Mean efficiency
Intercept	4.1265	0.436	< 2.2e-16***	
log No. of employees	0.6402	0.0977	5.621e-11***	
log intangible assets	-0.0238	0.1300	0.8543350	
log fixed assets	-0.0131	0.0239	0.5835594	0.4785
log current assets	0.1668	0.031	8.088e-8***	
Sigma Sq.	3.0337	1.1972	0.0112813**	
Gamma	0.6504	0.1554	2.842e-5***	

(*), (**), (***) represents a significance lower than 10%, 5%, and 1%, respectively
Source: Elaborated by the authors.

Table 6.
Stochastic frontier of medium and large companies

Variables	Coefficient	Std. Error	Pr(> t)	Mean efficiency
Intercept	4.4543	0.37647	< 2.2e-16***	
log No. of employees	0.7616	0.1012	5.495e-14***	
log intangible assets	0.1023	0.0453	2.4022e-2**	
log fixed assets	0.0797	0.0287	5.589e-3**	0.6837
log current assets	-0.0179	0.0412	0.663085	
Sigma Sq.	0.6499	0.1017	1.663e-10***	
Gamma	6.49E-05	1.14E-06	< 2.2e-16***	

(*), (**), (***) represents a significance lower than 10%, 5%, and 1%, respectively
Source: Elaborated by the authors

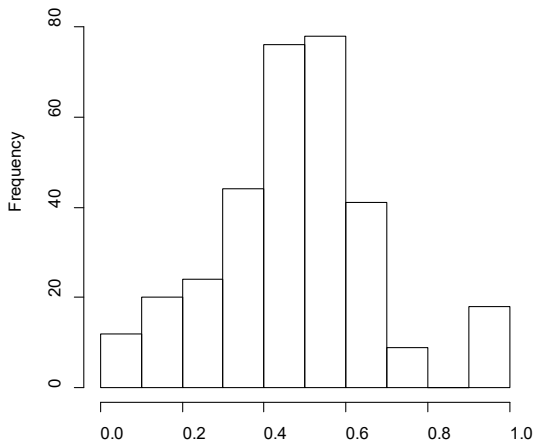


Figure 1. Mean efficiency of small agricultural companies distributed by frequency
Source: Elaborated by the authors.

The results allow us to affirm that the agricultural companies of the country are 52.52% efficient, with a significance of less than 1% in the same variables of the production function, added to the contribution in the significance of less than 5% comprised by intangible assets. The estimators obtained at a general level allow us to affirm that the sector has decreasing returns of scale in the sum of the coefficients of its elasticities (0.73), a scenario that in the long-term does not project increases in the technical properties of the national agricultural sector. Furthermore, the efficiency parameters ($\gamma = 0.7007$) and the variance (σ^2) have a significance of less than 5% and 1%, respectively.

On the other hand, this model allowed testing the hypothesis of the existence of efficiency variations by business size and by its location; promptly, the most

inefficient departments in the country are Norte de Santander and Putumayo, both borderline departments of Colombia.

Table 5 presents the lowest average technical efficiency value in the study (47.85%), with high significance (1%) in the same production factors obtained at a general level, with significant variance (σ^2) of less than 1% of the variables in production that are random and beyond the control of the company. The sum of the model estimators indicates decreasing returns to scale of less than one unit (0.77), with a significance efficiency ($\gamma = 0.6504$) of less than 5%. This is an opportunity to improve the business management of these productive factors.

Fig. 1 shows heterogeneity in the efficiency behavior of small agricultural companies in the country, with the highest frequencies in the range of 0.9 and 1.0 of efficiency.

The Table 6, which included medium- and large-sized companies presented high significance (1%) in the factor number of employees and current assets (like the general group), although it also reflected a significance of less than 5% in the factors of intangible and fixed assets. This group was the only one that made use of all the production inputs that have been linked to the production process in a significant way. This explains why a higher mean efficiency margin within the Colombian agricultural sector (68.37%) was reached; further, the production variance parameters obtained were less than 1% (γ), and the σ^2 was attributable to technical inefficiencies and random error. Therefore, there are plenty of possibilities of being positively affected by improvements in the management of production factors. Fig. 2 concentrates more than 50% of medium- and large-sized companies in the average efficiency range of 0.4 and 0.6, although it also reports companies that manage to operate on the efficient frontier. The most inefficient region was Santander, the department that borderlines with Venezuela and also borders the most inefficient department of the group of small companies (Norte de Santander).

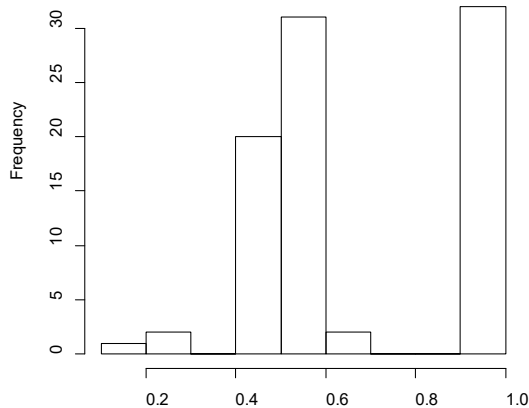


Figure 2. Average efficiency of medium and large companies
Source: Elaborated by the authors.

4. Discussion

Unlike the results found by Jara [10] for Latin American countries, the Colombian agricultural sector, independent of its business size, makes better use of the productive resources and capital (50%), without obtaining satisfactory average efficiency margins to be competitive; hence, the key to making the best use of their production inputs lies in business management. By company size, the results obtained coincidence with this same author, particularly regarding the low technical efficiency indexes of small agrarian companies; furthermore, results obtained in the current study also agreed with Moreno and Castro [23] in the favorable performance found in the average efficiency of the large national agrarian companies. Along these same lines in Mexico, Mungaray and Ramírez [7] indicated increases in the productivity of personnel linked to small businesses that access technology transfer and capacity-building programs. Just as in Colombia, leading entities in the national agricultural sector have shown that the low-efficiency margins are due to the limited access and linkage of technologies to the sector (Corpoica, currently AGROSAVIA [1]).

Consequently, the study verifies the vast opportunity to improve the productive efficiency of the Colombian agrarian sector and especially, to increase the decreasing returns to scale of the production frontier of the small companies in the sector, from the implementation of business management strategies, such as higher availability of qualified human resources linked to the productive and institutional support apparatus, providing greater accessibility to liquid money in the operational year of the company, with an expansion in the investment in intangible assets and rights subject to economic valuation by the company.

Regarding the effect of the location of the company, the agricultural departments with the highest technical inefficiency are borderline regions with countries such as Venezuela, Ecuador, and Peru. This leads to explaining that their inefficiency is due to the high labor informality margins in the sector, the devaluation of the currency, and tax collection losses due to the entry of smuggled goods, among other aspects, which subsequently motivate its empirical research.

5. Conclusions

The estimation method for the stochastic frontier functions used for the Colombian agricultural sector allowed estimating the sectorial efficiency by business size and by departmental location.

At a general level, the agricultural companies showed medium positive efficiency levels and with high significance in the productive factors number of employees, current assets and intangible assets; therefore, these factors are key to a more significant contribution to the increase in returns to scale of the agricultural business efficiency of the country. In particular, the medium and large companies in the sector use all their inputs that were part of the study to improve productive efficiency, that is, that the management carried out by the entrepreneur in this group is more successful in obtaining higher income.

The business size within the Colombian agrarian sector reports margins in its productive efficiency, being the group of large companies the ones with the highest incomes; besides, at the departmental level, inefficiency factors were found based on the business location, particularly marked in regions bordering countries such as Venezuela, Ecuador, and Peru. This leads to recommending the generation of differential public-private policies for the national agricultural sector (by size and location of the company), linked to small business management strategies in various areas such as i) higher quality and local supply of qualified personnel, ii) increase the R+D+i and technology transfer generation environments, and iii) encourage official and unofficial mechanisms of access to credit for higher liquidity in the short term.

Acknowledgements

Many thanks to Corporación Colombiana de Investigación Agropecuaria – AGROSAVIA for allowing devoting part of the time of the researchers to carry out this study.

References

- [1] CORPOICA. Ciencia, tecnología e innovación en el sector agropecuario. Diagnóstico para la Misión para la Transformación del Campo. Bogotá D.C., [en línea]. 2015. Disponible en: <https://colaboracion.dnp.gov.co/CDT/Agric%20ultrapecuarioforestal%20y%20pesca/Diagn%C3%B3stico%20de%20la%20Ciencia,%20Tecnolog%C3%ADa%20e%20Innovaci%C3%B3n%20en%20el%20Sector%20Agropecuaria-CORPOICA.pdf>
- [2] Quintero, J., Prieto, W., Barrios, F. y Leviller, L., Determinantes de la eficiencia técnica en las empresas colombianas 2001-2004. Semestre Económico, [en línea]. 11(22), pp. 11-34, 2008. ISSN 0120-6346. Recuperado en: <https://revistas.udem.edu.co/index.php/economico/article/view/685>.
- [3] Farrell, M., The measurement of production efficiency. Journal of The Royal Statistical Society, 120, pp. 253-281, 1957. DOI:10.2307/2343100.
- [4] Debreu, G., The coefficient of resource utilization. Econometrica, 19, pp. 14-22, 1951. DOI: 10.2307/1906814.
- [5] Koopmans, T., An analysis of production as an efficient combination of activities, in: Koopmans, T.C. (Ed.): Activity analysis of production and allocation, Proceeding of a Conference, John Wiley and Sons Inc., London: 1951, pp. 33-97,
- [6] Battese, G. and Coelli, T., A model for technical inefficiency effects in

- a stochastic frontier production functions for panel data. *Empirical Economics*, 20(2), pp. 325-332, 1995. DOI: 10.1007/BF01205442.
- [7] Mungaray, A. and Ramírez, M., Capital humano y productividad en microempresas. *Investigación Económica*, [en línea]. LXVI(260), pp. 81-115, 2007. Recuperado en: https://mpira.ub.uni-muenchen.de/4064/1/MPRA_paper_4064.pdf.
- [8] Domínguez, I., Evolución de la teoría sobre el análisis y gestión de la liquidez empresarial. *Cofin Habana*, [en línea]. 9(1), pp. 66-80, 2015. Disponible en: <http://www.cofinhab.uh.cu/index.php/RCCF/article/view/166/165>.
- [9] Albormoz, C., Administración del capital de trabajo. Un enfoque imprescindible para las empresas en el contexto actual. *Revista Digital de Economía*, [en línea]. 2013. Disponible en: <https://dialnet.unirioja.es/servlet/articulo?codigo=4784615>.
- [10] Jara, N., Análisis de la eficiencia de empresas agroalimentarias de América Latina: un estudio empírico de fronteras estocásticas de producción. Tesis de maestría en economía agrícola, alimentaria y de recursos naturales. Escuela Técnica Superior de Ingeniería Agronómica, Alimentaria y de Biosistemas, Universidad Politécnica de Madrid, Madrid, España, 2017.
- [11] Martínez, A., Aplicación de la función Cobb-Douglas: secado de yuca en la Costa Atlántica de Colombia. *Comercio Exterior*, [en línea]. 54(1), pp. 970-974, 2004. Disponible en: <http://revistas.bancomext.gob.mx/rce/magazines/70/3/RCE3.pdf>.
- [12] Martínez, A., Estimación de una función de costos de producción en el cultivo del algodón en el Valle del Sinú. *Temas Agrarios*, [en línea]. 15(2), pp. 75-82, 2010. Disponible en: <https://doi.org/10.21897/rta.v15i2.1196>.
- [13] Perdomo, J. y Mendieta, J., Factores que afectan la eficiencia técnica y asignativa en el sector cafetero colombiano: una aplicación con análisis envolvente de datos. *Desarrollo y Sociedad*. Segundo Semestre, pp. 1-45, 2007. DOI: 10.13043/dys.60.1.
- [14] Battese, G. y Coelli, T.J., Funciones de Producción de frontera. Eficiencia técnica y datos de panel: con aplicación en producción de arroz en agricultores en la India. *Journal of Productivity Analysis* 3, pp. 53-169, 1992.
- [15] Esteban, J. y Coll, V., Competitividad y eficiencia. *Estudios de Economía Aplicada*, (21)3, pp. 423-450, 2003.
- [16] Greene, W., Maximum likelihood estimation of econometric frontier functions. *Journal of Econometrics*, [online]. 13, pp. 27-56, 1980. Available at: <https://citeseerx.ist.psu.edu/viewdoc/download?doi=10.1.1.598.7390&rep=rep1&type=pdf>
- [17] Battese, G. and Corra, G., Estimation of a production frontier model: with application to the Pastoral Zone of Eastern Australia. *Australian Journal of Agricultural Economics*, 3(21), pp. 169-179, 1977. Available at: <https://onlinelibrary.wiley.com/doi/epdf/10.1111/j.1467-8489.1977.tb00204.x>
- [18] Jondrow, J., Lovell, C., Materov, I. and Schmidt, P., On estimation of technical inefficiency in the stochastic frontier production function model. *Journal of econometrics*, 19(2-3), pp. 233-238, 1982.
- [19] R version 3.5.2. Eggshell Igloo, Copyright (C) 2018. The R Foundation for Statistical Computing Platform: i386-w64-mingw32/i386 (32-bit), 2018.
- [20] ORBIS. Base de datos contables de empresas agroalimentarias de Colombia (sector de agricultura, alimentación y comercio) reportadas en la base de datos ORBIS. Universidad Complutense de Madrid, Madrid, España, 2018.
- [21] Ministerio de Comercio, Industria y Turismo. Definición tamaño empresarial: micro, pequeña, mediana y grande, [en línea]. 2019. Disponible en: <http://www.mipymes.gov.co/temas-de-interes/definicion-tamano-empresarial-micro-pequena-mediana>
- [22] Hand, J. and Lev, B., Intangible assets. Values, measure, and risks. Oxford University Press, Oxford and New York, USA, 2003.
- [23] Moreno, J. and Castro, J., Análisis de la productividad, eficiencia y sus factores explicativos: el caso de las empresas colombianas, 2005-2010. *Revista de Métodos Cuantitativos para la Economía y la Empresa*, [en línea]. (26), pp. 315-343, 2018. Disponible en: [Diaz_2018_Productividad, Eficiencia_empresas Colombia.pdf](http://www.diaza2018_Productividad_Eficiencia_empresas Colombia.pdf)

M. Arias-Robles, is MSc. in Rural Development. He has worked in research, development, innovation and agricultural technology transfer projects. She currently works as Regional Innovation Coordinator at the AGROSAVIA Turipaná Research Center, El Carmen de Bolívar Headquarters, Colombia.
ORCID: 0000-0002-3468-993X

S. Alarcón, is Dr. in Agricultural Engineering from the Polytechnic University of Madrid, Spain. Extensive experience as a full professor at the Polytechnic University of Madrid, Spain, where he also holds the position of Deputy Director of the Department of Agricultural Economics, Statistics and Business Management.
ORCID: 0000-0001-5823-4238