



Unconsolidated fault vertical sealing ability evaluation method and its application during Stationary phase

Ning Sun¹, Guang Fu¹, lili Liu¹, Jingfeng Wu^{1,2*}

¹Northeast Petroleum University, Daqing, 163318;

²Exploration and Development Research Institute of Daqing Oilfield Company Ltd, 163712, China.

* Corresponding author: jingfengwu_nepu@163.com

ABSTRACT

To study the vertical distribution of oil, gas in the fracture zone of the oil and gas bearing basin, based on the mechanism and influence factors of vertical sealing oil and gas, this paper has studied the necessary conditions of unconsolidated fault vertical sealing oil, gas, determination method for compaction and diagenetic of the fault filling. Concluded that the static period of fault vertical sealing oil and gas required that fault should be cut by mudstone, through comparing the relative period of the fault rock starting consolidate and the fault stopping activity to determine whether the fracture fillings are compacted into rock. If the time fault rocks began compaction into rock is earlier than the time fault stopped activity, fault filling has been consolidated; otherwise not compaction. By determining the displacement pressure of the fracture filling material and the rock displacement pressure of the underlying reservoir, a method is established to evaluate static unconsolidated fault vertical sealing oil and gas ability by comparing the relative size of the two. Applied it in the evaluation of the vertical sealing capacity f_1 in the one to three sections of the Dongying formation and 5 sections of the formation in the southern Bohai Bay Basin. The results show that the fault f_1 in one to three of the Dongying formation have the greater filler displacement pressure than the displacement pressure of underlying reservoir rock, as the vertical sealed is favorable for oil and gas accumulation and preservation. It's accordant with oil and gas distribution has been found in Dongying formation at present in the formation of the South Fort 5 structure, which indicates that the method is feasible to evaluate the vertical sealing ability of the fault in the stationary phase.

Keywords: Stationary phase; Unconsolidated; Fault; Vertical sealing; Evaluation method.

Método de evaluación de la capacidad de sellado vertical de fallas no consolidadas y su aplicación durante la fase estacionaria

RESUMEN

Con el fin de estudiar la distribución vertical de petróleo y gas en la zona de fractura de la cuenca que los contiene, según el mecanismo y los factores de influencia del sellado vertical del petróleo y el gas, en este artículo se estudian las condiciones necesarias de la falla no consolidada de sellado vertical de petróleo y gas, el método de determinación por compactación y la diagenética del llenado de fallas. Se concluye que el período estático de la falla de sellado vertical de petróleo y gas requería que la falla fuera cortada por piedra fangosa, mediante la comparación del período relativo en que la falla de roca se comienza a consolidar y la actividad de detención de fallas para determinar si los rellenos de fractura están compactados en la roca. Si el tiempo en que las rocas comenzaron a compactarse es anterior a que se detuvieran las fallas, el relleno de fallas se ha consolidado; de lo contrario, no hubo compactación. Al determinar la presión de desplazamiento del material de relleno de fractura y la presión de desplazamiento de roca del reservorio subyacente, se estableció un método para evaluar la capacidad de gas y petróleo de sellado vertical de falla estática no consolidada comparando el tamaño relativo de los dos. Se aplicó en la evaluación de la capacidad de sellado vertical f_1 en una de las tres secciones de la formación Dongying y en cinco secciones de la formación en la cuenca sur de la Bahía de Bohai. Los resultados muestran que la falla f_1 en uno a tres de la formación de Dongying tiene la mayor presión de desplazamiento del relleno que la presión de desplazamiento de la roca del yacimiento subyacente. El sellado vertical es favorable para la acumulación y conservación de petróleo y gas. Se ha encontrado que concuerda con la distribución de gas y petróleo en la formación Dongying en la actualidad en la formación de la estructura South Fort 5, lo que indica que el método es factible para evaluar la capacidad de sellado vertical de la falla en la fase estacionaria.

Palabras clave: Fase estacionaria; no consolidado; falla; sellado vertical; método de evaluación.

Record

Manuscript received: 01/09/2018

Accepted for publication: 13/02/2019

How to cite item

Sun, N., Fu, G., Liu, I., & Wu, J. (2019). Unconsolidated fault vertical sealing ability evaluation method and its application during Stationary phase. *Earth Sciences Research Journal*, 23(1), 35-42. DOI: <https://doi.org/10.15446/esrj.v23n1.78831>

$$T_f = T_s e^{-cz} \quad \text{Equation 3. (Xiaofei, Xue \& Lixu, 2012)}$$

$$T_f = T_o - T_{fo} \quad \text{Equation 4. (Tong, Xiaofei \& Haixue, 2016)}$$

From Equation 2, taking $Z_f=0$ (indicating that the fracture filling is not compacted into rock), the time for the fracture to start compaction and diagenesis is shown in Equation 3. If the T_{fo} is earlier than the fracture stopping time T_o , then the fracture filling is not compacted diagenetic, on the contrary, if the time T_{fo} for starting compaction and diagenesis of the fracture filling is later than the fracture stopping activity time T_o , then the fracture filling has started compaction and diagenesis. The compaction diagenetic time can have calculated by Equation 4.

Evaluation method of vertical sealing ability of oil and gas of unconsolidated fractures of fault in stationary phase

It can be seen from the above that it is necessary to determine the displacement pressure of the fracture filling and the displacement pressure of the underlying reservoir rock to judge whether the unconsolidated fractures in the stationary phase seal off oil and gas.

Determination of displacement pressure of fracture filling

Due to the limitations of drilling and coring, it is impossible to test the displacement pressure of the fracture filling directly at present. It can only be determined indirectly through the experimental results of the physical model. In order to obtain an empirical relationship between the fracture filling displacement pressure and the pressure and mud content, clay and silt are mixed to simulate fracture filling with different mud content according to the ratio of 100:0, 80:20, 60:40, 40:60, 20:80 and 0:100 respectively, poured into a stirrer and stirred evenly, and moistened with an atomizer. A manual pressure pump has used to apply pressures of 1 MPa, 5 MPa, 10 MPa, and 15 MPa to simulate fracture filling under conditions of 100 m, 500 m, 1000 m, and 1500 m underground respectively. Then, 20 pieces of fracture filling samples with a diameter of 2.5 cm will be taken out, compressed, dried, vacuumized, and

treated with saturated kerosene. Finally, the samples have placed in the core holder and the displacement pressure has tested using high-pressure solid gas. The results are shown in Table 1. By mathematical regression between the test results of displacement pressure of the fracture filling and the pressure and mud content in Table 1, the formula for calculating the displacement pressure of the fracture filling by using the pressure and the mud content of the fracture filling is available as shown in Equation 5. The pressure of the fracture filling N_f in Equation 5 is calculated by the Equation 6 according to the burial depth, R_f in Equation 5 can be calculated from Equation 7 based on the fault displacement and the thickness and mud content of the formation that is faulted by it.

$$P_f = 0.1197e^{-3N_f R_f} \quad \text{Equation 5 (Yanfang, Xuan \& Xiaofei, 2007)}$$

In the equation:

P_f —fracture filling actual measured displacement pressure, MPa;

N_f —pressure on fracture filling, MPa;

R_f —fracture filling mud content, decimal.

$$N_f = \rho_w Z \quad \text{Equation 6 (Huiting, Long \& Yan, 2014)}$$

$$R_f = \frac{\sum_{i=1}^n H_i R_i}{L} \quad \text{Equation 7 (Guang, Haoran \& J., 2014)}$$

In the equation:

R_f —fracture filling mud content, decimal;

H_i —thickness of Layer i stratum that faulted by faults, m;

R_i —mud content of Layer i stratum that faulted by faults, decimal;

n —number of strata that have been faulted by faults;

L —fault displacement, m.

Determination of displacement pressure of underlying reservoir rock

The displacement pressure of the underlying reservoir rock can be obtained by direct coring test. If there is no core, it can also be calculated by the

Table 1. The measured displacement pressure and the pressure and mud content data of the fracture filling material

Sample No.	Depth(m)	Displacement Pressure	Mud Content(%)
1	1500	2.11	100
2	1500	1.10	80
3	1500	0.54	60
4	1500	0.32	40
5	1500	0.19	20
6	1000	0.86	100
7	1000	0.50	80
8	1000	0.31	60
9	1000	0.18	40
10	1000	0.12	20
11	500	0.41	100
12	500	0.28	80
13	500	0.18	60
14	500	0.12	40
15	500	0.08	20
16	100	0.26	100
17	100	0.16	80
18	100	0.12	60
19	100	0.08	40
20	100	0.06	20

empirical correlation (Equation 9) between the measured displacement pressure of the reservoir rock in the study area, the compacted diagenetic burial depth, and mud content by using its compacted diagenetic burial depth. If there are no obvious overlying strata of the uplift and denudation, and it can be replaced by the current burial depth and the mud content, which can be calculated by Equation 8 using its natural gamma data.

$$V_{sh} = \frac{2G_{CUR} \cdot I_{GR} - 1}{2G_{CUR} - 1} \quad \text{Equation 8. (Jijian, Lee \& Guang, 2012)}$$

$$\text{thereinto} \quad I_{GR} = \frac{GR - GR_{min}}{GR_{max} - GR_{min}}$$

In the equation:

GR—natural gamma-ray logging value of target formation;

GR_{max}—natural gamma-ray logging value of mudstone formation;

GR_{min}—natural gamma-ray logging value of sandstone formation;

I_{GR}—natural gamma relative value;

G_{CUR}—the empirical coefficient related to formation, 3.7 for new formation, 2.0 for old formation.

$$P_r = ae^{bR_f Z_f} \quad (9)$$

In the equation:

P_r—measured displacement pressure of reservoir rock, MPa;

Z_r—reservoir rock compaction diagenesis burial depth, m;

R_r—reservoir rock mud content, decimal;

a,b—constants related to area.

Evaluation of vertical oil and gas sealing capacity of unconsolidated faults in stationary phase

By comparing the relative size of the above-identified fracture filling displacement pressure and the displacement pressure of underlying reservoir rock, the vertical oil and gas sealing ability of the unconsolidated fracture in the stationary phase can be evaluated. If the fracture filling displacement pressure is greater than or equal to the displacement pressure of underlying reservoir rock, then the fracture has closed vertically, conversely, if the fracture filling displacement pressure is less than the underlying displacement pressure of reservoir rock, then the fracture is not closed vertically.

Example Application

Selecting the f₁ unconsolidated fault of the Nanpu No.5 structure in the Nanpu Sag of the Bohai Bay Basin as an example, using the above method,

Table 2. The measured displacement pressure of the reservoir rocks in the south of the depression and its compaction and the data of the depth of the rock and the mud content

Well No.	Depth/m	Mud Content/%	Displacement Pressure/Mpa
G49	2448.6	5.64	0.89
NP1-37	3045.5	8.79	0.62
M28×1	3268.6	24.48	1.34
G62	4054.6	22.28	1.31
NP5-10	3320	32.4	2.82
NP4-51	2449.79	54.6	3.18
B7	3597.58	38.7	4.12
M5	2768.36	51.21	3.77
G3106	3899.5	36.52	2.06
B5	4219.4	35.89	4.25
M108×1	3345.3	46.16	3.11

this paper studies the vertical sealing ability of the stationary phase in the first, second and third sections of the Dongying Formation. Through the analysis of the relationship between the research method and distributions of oil and gas found in the first, second and third sections of the Dongying Formation of Nanpu No. 5 structure at present, the feasibility of the proposed method in evaluating the vertical sealing ability of the unconsolidated faults in the stationary phase is verified.

The Nanpu No. 5 structure is located in the northwest of the Nanpu Sag. It is an important oil and gas bearing structure in the Nanpu Sag. The structure feature is generally a draping structure developed on the background of buried hill, and its tectonic direction is northeast to east. It is complicated by near-east-west fracture cutting, as shown in Figure 2. The formations developed from the bottom to the top are the Kongdian Formation, the Shahejie Formation, the Dongying Formation of the Paleogene, and the Guantao Formation, the Minghuazhen Formation of the Neogene, and the Quaternary. Up to now, this structure has verified a large number of oil and gas shows in Shahejie Formation and Dongying Formation. Among them, there are relatively more showing in the first, second, and third sections of Dongying Formation, as shown in Figure 3. The f₁ fault is located in the core section of Nanpu No. 5 structure, of which the trend is northeast or east, with a relatively large scale of extension, as shown in Figure 2. The displacement of the lower part of f₁ fault is larger than the upper part, and the average displacement is 70-145m. The dip varies greatly from 49°-72°. From Sha-1 member of f₁ fault to the ground surface, the fracture filling has not compacted and consolidated so far. Whether it can form vertical sealing for oil and gas in the first, second and third sections of the Dongying Formation should be the key to oil and gas exploration in the Dongying Formation of Nanpu No. 5 Structure. The burial depth of f₁ fracture in the first, second and third sections of the Dongying Formation can be obtained from Figure 3, and the compacted diagenetic time (deposition time since its inception) of the surrounding rock with the same burial depth as the f₁ fracture can be obtained from the geological time scale. The diagenesis coefficient of the surrounding rock and the initial porosity can be determined from Fig. 4. Calculated from the Equation 3, the time of compaction and diagenesis of the f₁ fracture is 6.58Ma, which is obviously earlier than the f₁ fault stopping activity time (0Ma), indicating that the f₁ fracture has not been compacted and consolidated although the activity has stopped so far. From the burial depth of the fault f₁ in the first, second, and third sections of the Dongying Formation, and the pressure received by the fracture filling can be calculated from Equation 6, and then from fault displacement of the fault f₁ in the first, second and third section of the Dongying Formation. The thickness of the stratum faulted and mud content have calculated by Equation 7, the mud contents of the fracture filling are 0.27, 0.29, and 0.31 respectively. Finally, the pressure received by fracture filling of f₁ fault in the first, second, and third segments of the Dongying Formation and mud content are substituted into Equation 5, and the displacement pressures of the f₁ fault filling in the first, second, and third sections of the Dongying Formation are calculated as 0.41 MPa, 0.59 MPa, and 0.75 MP, respectively. From the compaction diagenetic burial depth of reservoir rocks in the first, second and third sections of the Dongying Formation, where the fault f₁ is located, because there is no significant uplift and erosion, and it can have replaced by the current burial depth. The natural gamma logging has calculated by Equation 8, the mud contents of reservoir rocks in the first, second and third sections of Dongying formation are 0.15, 0.17, and 0.10 respectively. The compaction diagenetic burial depth and mud content of reservoir rocks in the first, second and third sections of the Dongying Formation have substituted into the relationship between the Nanpu Depression reservoir rock measured displacement pressure and its compaction diagenetic burial depth and mud content, where we can see in Table 2 and Equation 10. The displacement pressures of reservoir rocks in the first, second and third sections of the Dongying Formation are 0.12 MPa and 0.15 MPa and 0.10 MP respectively.

Comparing the relative size among the displacement pressures of the fracture f₁ filling in the first, second and third sections of the Dongying Formation and the displacement pressure of the underlying reservoir rock. It can be seen that the displacement pressures of the fault fracture f₁ filling in the first, second and third sections of the Dongying Formation are greater than them of the underlying reservoir rocks. In addition, the fault is close vertically, which is conducive to the accumulation and preservation of oil and gas in the first, second and third sections of the Dongying Formation.

$$P_r = 0,0593e^{0,1662Z_f R_f} \quad (10)$$

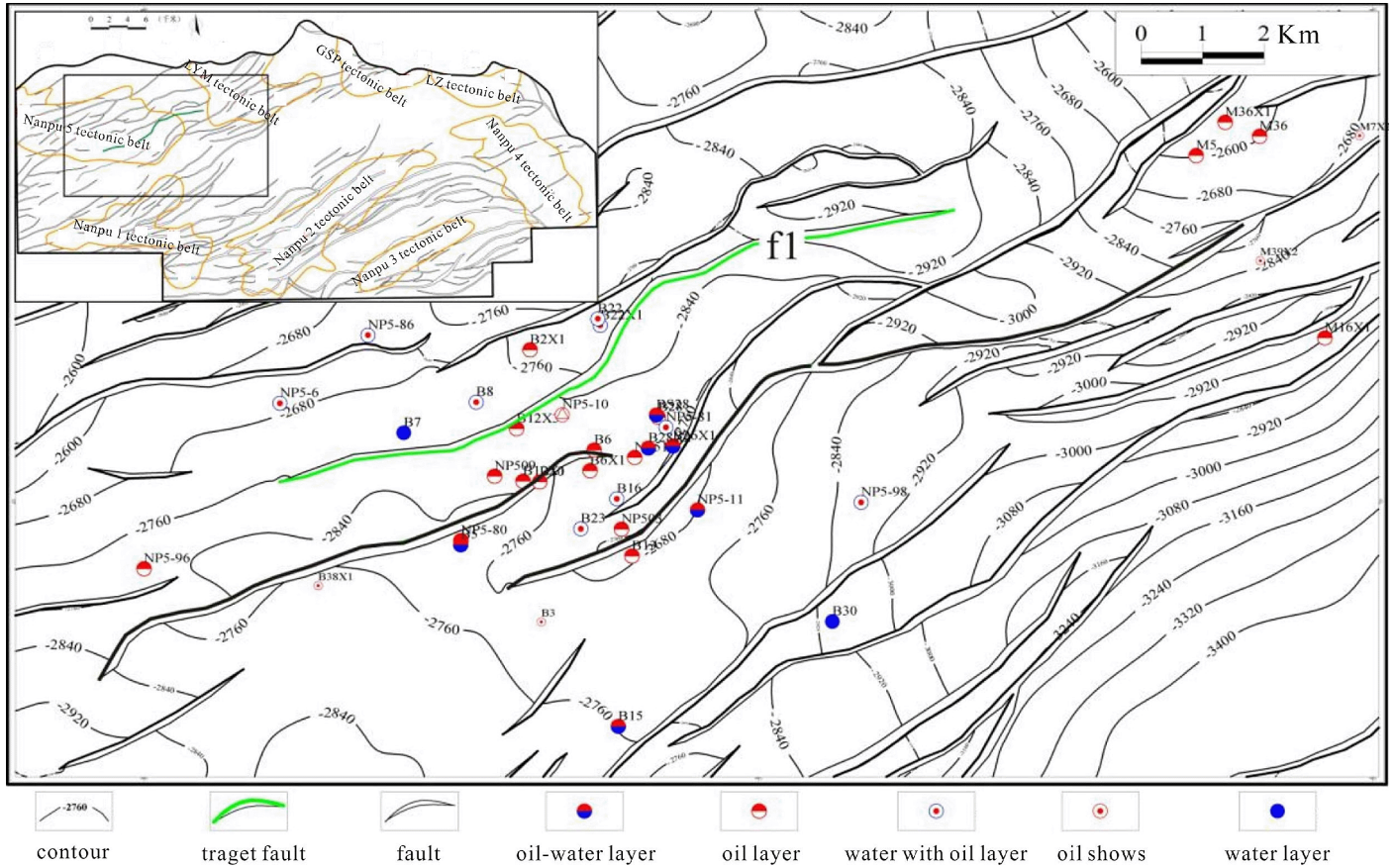


Figure 2. The relationship map of F1 fault and hydrocarbon distribution in Nanpu 5

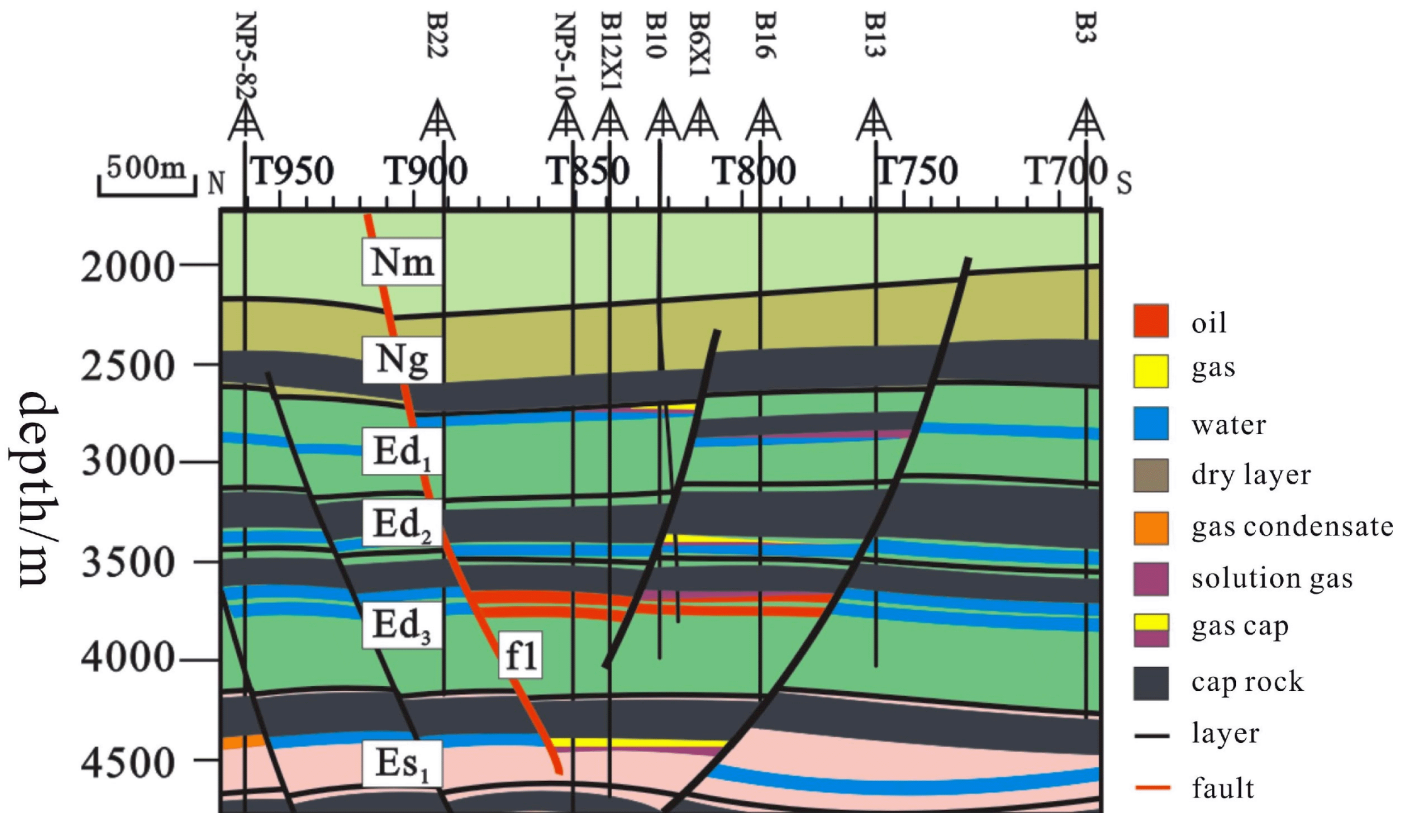


Figure 3. Reservoir profile of f1 fault in Nanpu No. 5

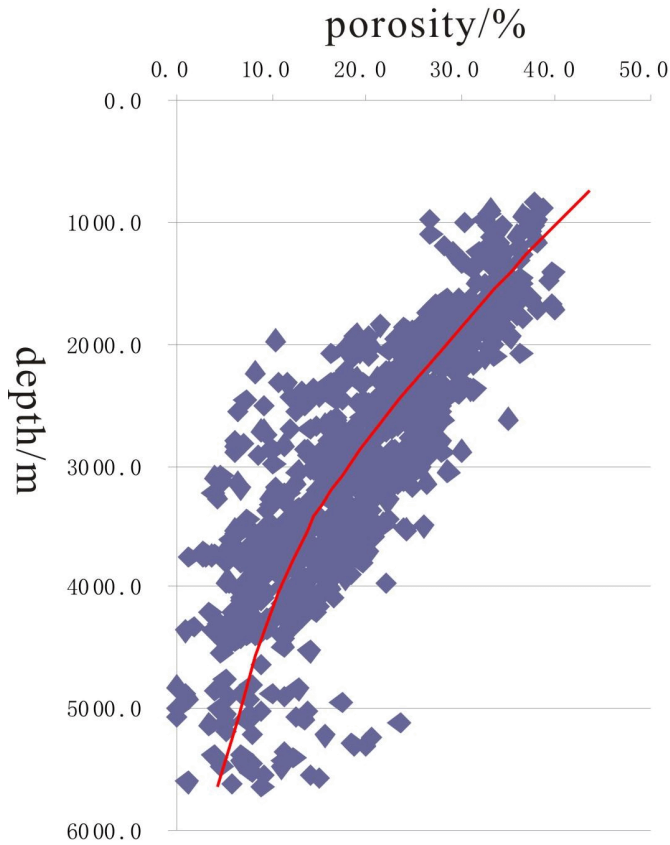


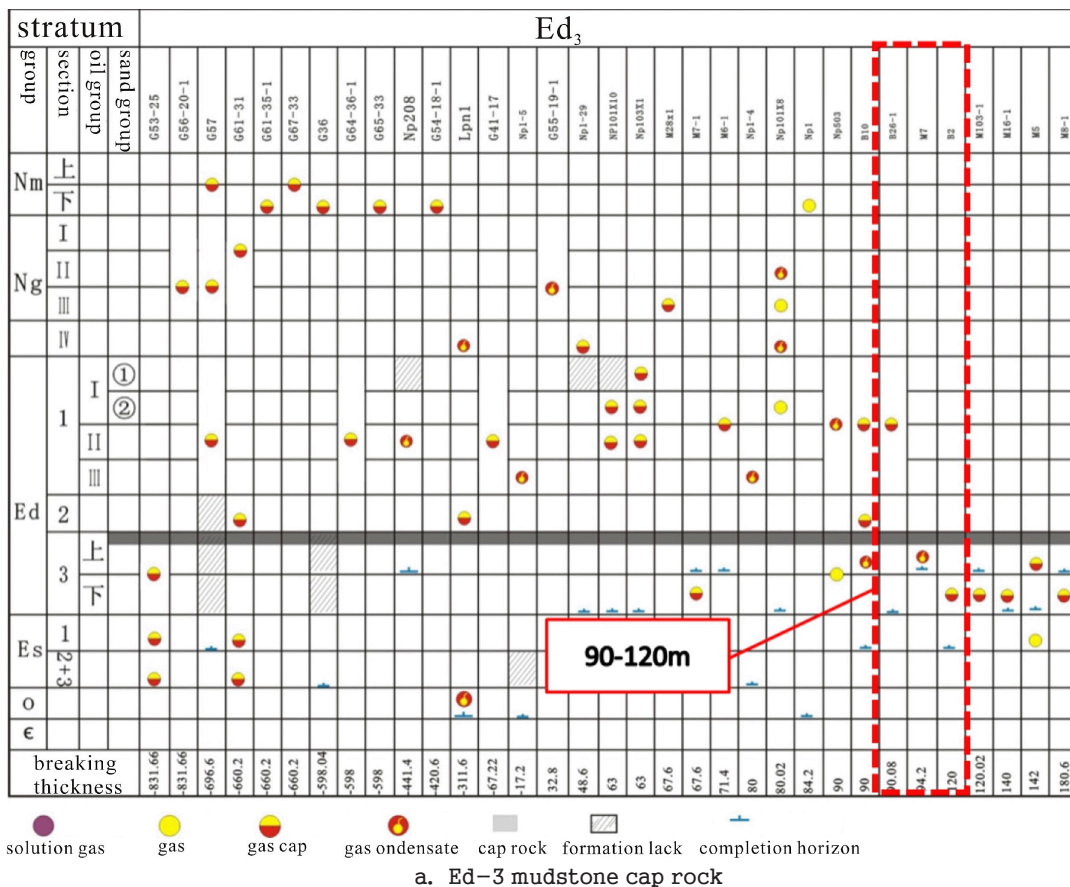
Figure 4. Relation of porosity and burial depth of sandstone and mudstone formation in Nanpu Sag

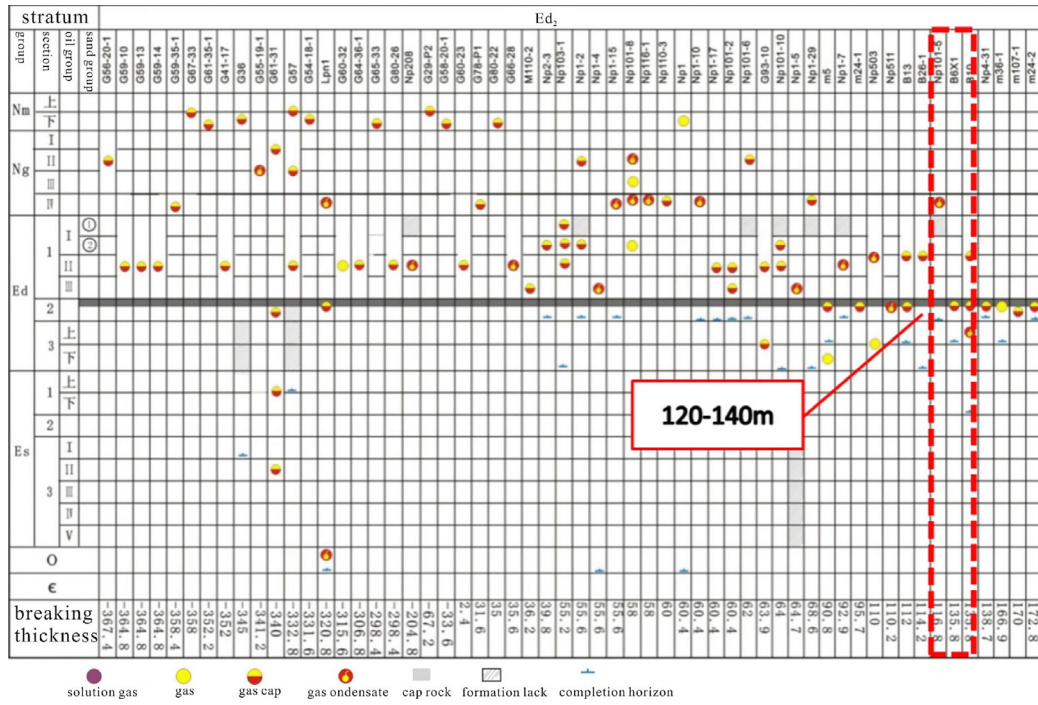
In the equation, Pr, Zr, and Rr have the same meaning as the Equation 8. Seeing from Fig. 3, there is oil and gas showing in both Ed-1 and Ed-3 of the f_1 fault in Nanpu 5 structure. Although the f_1 fault is not compacted as diagenetic, the displacement pressure of fracture filling is greater than that of the underlying reservoir rock, which is conducive to the accumulation and preservation of oil and gas. Moreover, during the f_1 fault activity, the breaking thickness of the Guan-3 member volcanic cap rock and the Ed-3 mudstone cap rock (173m and 177m, respectively) is greater than the minimum breaking thickness required for sealing oil and gas (Figure 5). Oil and gas cannot transport and dissipate upward along f_1 fault. It is also conducive to hydrocarbon accumulation and preservation. There is no oil and gas showing in Ed-2 because the breaking thickness of the mudstone cap rock in Ed-2 (110m) is smaller than the minimum breaking thickness required for sealing oil and gas (Figure 5). The f_1 fault activity is connected up and down in Ed-2 mudstone cap rock. Thus the underlying oil and gas dissipate along the fracture of f_1 . Even though the displacement pressure of the fracture filling is greater than the displacement pressure of the underlying reservoir rock after the gas stops moving, and it is vertically sealed, there will be no accumulation of oil and gas.

Conclusions

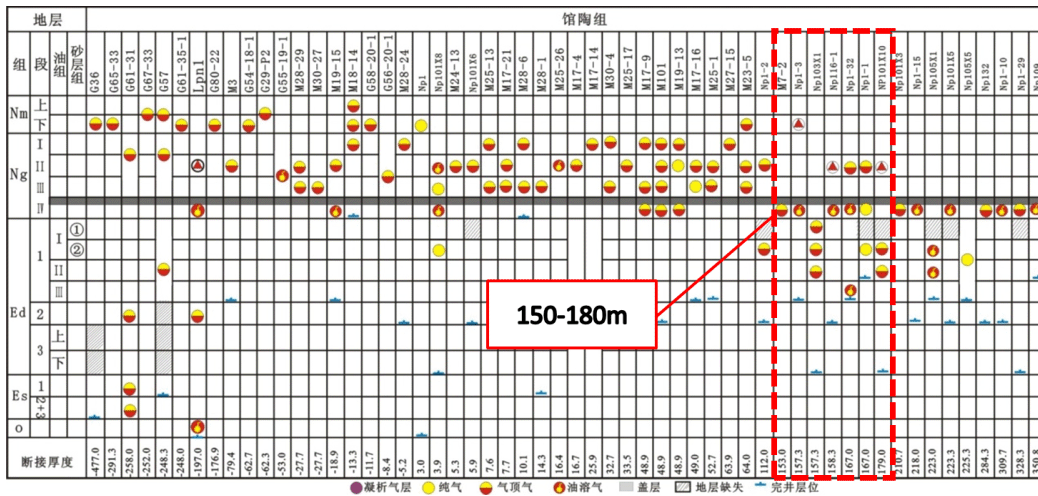
The required condition for the vertical sealing of oil and gas of unconsolidated fault in the stationary phase is that the fault being fractured should be mudstone cap rock. Based on the predicted time for the initiation of compaction and diagenesis of the fault filling and the time when the fracture ceases activity, compaction and diagenesis can be determined. If the time that the fault filling begins to form earlier than that the fracture stops activity, then the fault rock is not compacted and consolidated, otherwise it is compacted and consolidated.

In this paper, the displacement pressure of the fault filling and the rock mass of the bottom reservoir is determined, and the both relative sizes have compared. In this paper, a set of evaluation methods for the vertical sealing ability of the loose phase and the stationary phase has established. It has





b. Ed-2 mudstone cap rock



c. Guan-3 mudstone cap rock

Figure 5. Determination map of the minimum breaking thickness of cover to seal hydrocarbon in Nanpu depression

applied to the vertical oil and gas seal of the first, second and third sections of the Dongying Formation by the fixed-phase structural loose fault f1 in the Blocking ability evaluation of Nanpu Sag, Bohai Bay Basin. The results show that the displacement pressure of fault filling of f1 fault in the first, second and third sections of the Dongying Formation is greater than the displacement pressure of the underlying reservoir rock, and it is vertically closed, which is conducive to oil and gas accumulation and preservation. It matches the existing discovered oil and gas distributions in the first, second, and third sections of the Dongying Formation near the f1 fault of the Nanpu No.5 structure. It shows that the method is feasible to evaluate the vertical oil and gas sealing ability of the unconsolidated faults in the stationary phase.

References

- Guang, F., & Dan, Y. (2005). Shurenouer fault vertical sealing distribution and its relationship with hydrocarbon accumulation. *Acta petrolei Sinica*, 06, 40-45.
- Guang, F., Haoran, W., & J, H. (2014) Fault vertical sealing off - the pressure difference method for the pressure difference method and its application. *Journal of petroleum*, 04, 685-691.
- Guang, F., Yuxi, L., & Yunfeng, Z. (1997) Research methods of fault vertical sealing oil gas and its application. *Natural gas industry*, 06, 31-34+5.
- Huiting, H., Long, W., & Yan, L. (2014) Research methods and application of vertical sealing ability of the overpressure mudstone cap rock in the vertical sealing ability. *Oil and gas geology*, 03, 359-364.
- Jijian, S., Lee, L., & Guang, F. (2012) Caprock fault vertical sealing evaluation method and application of quantitative. *Journal of Jilin University (Earth Science Edition)*, S2, 162-170.
- Tong, W., Xiaofei, F., & Haixue. (2016). The quantitative evaluation of the brittle plastic deformation characteristics and sealing ability of gypsum rock salt. *Geological theory*, 01, 127-137.
- Xiaofei, D., Xue, G., & Lixu, Z. (2012) The formation and evolution of mudstone smear and oil and gas migration and sealing. *China University of Mining and Technology*, 01, :52-63.
- Yanfang, L., Xuan. S., & Xiaofei, F. (2007). The vertical sealing of fault quantitative evaluation method and its application. *Acta petrolei Sinica*, 05, 34-38.